

ATC Pacific Towel Rails

The ATC Pacific towel rails are designed to deliver a service for drying towels and clothing. It is not intended to provide the only heating source in a room or bathroom. Larger models will take the chill off the air in an average bathroom or en-suite, however an alternate heating source should be installed in combination with the towel rail.

The Pacific Range of towel rails is available in three widths and heights in high quality chrome-plated finish or white powder coating.

No routine maintenance is necessary apart from occasional cleaning. Do not use any abrasive cleaners to clean the towel rail as they will damage the surface of the Towel Rail; any such damage is not covered under the warranty

Dimensions (millimeters)

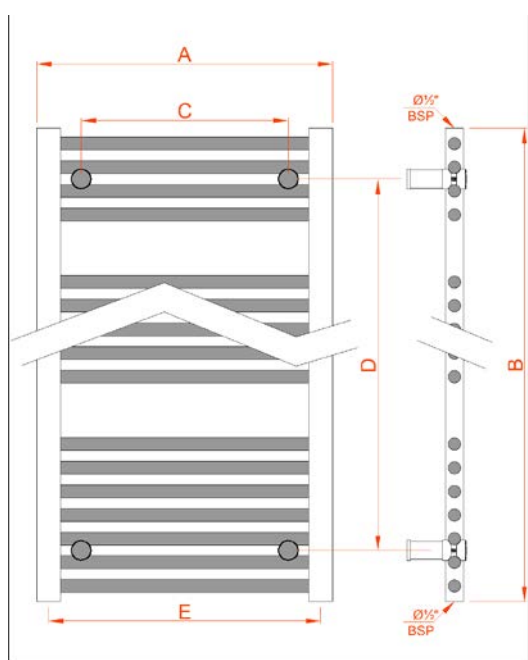


Diagram 1

A	400			500			600		
B	800	1100	1600	800	1100	1600	800	1100	1600
C	250			350			450		
D	628	928	1428	628	928	1428	628	928	1428
E	355			455			555		

Table 1

General Information – Water Fed Towel Rails

Before fitting the radiator to a water fed system it is necessary to wash out the heating system to remove any existing mud, scale, work residues, traces of flux, oil, etc.

When the pH Value of the water supplying the system is outside the 5.5-8.5 range and/or when the dissolved solids in the water is above 0.1mg/liter, it is a requirement that the heating system components (the towel radiator is one of these) are protected with a with proper chemical treatment compatible with all parts in contact with water in the system, including the silicon rubber gaskets that are used on the towel rail.

In order to mount the radiator to the wall, it is necessary to choose the correct type of fixings for the wall material. These may be different than the fixings that are supplied with the radiator.

If the temperature of the water in the heating system exceeds 50°C, please install a warning near the radiator to avoid any accidental scalding.

Do not climb on the radiator.

The radiator maximum working temperature is 95°C, the maximum working pressure is 8 bar. Do not exceed these values.

Electrical Towel Rails

WARNING - This appliance must be earthed

The electrical installation of this towel rail must be carried out by a competent electrician in accordance with the current I.E.E Regulations for Electrical Equipment. The towel rail is suitable for use on an A.C.~ electrical supply.

Before installation check that the supply voltage corresponds with that marked on the rail.

IMPORTANT-The wires in the mains lead are coloured in accordance with the following code:

BLUE - NEUTRAL
 BROWN - LIVE
 GREEN/ YELLOW - EARTH

This appliance must only be used on A.C. mains supply of 230/240 Volts.

Important Safety Advice

WARNING

THE SURFACE OF THIS TOWEL RAIL IS HOT.

In order to be effective, the towel rail will get hot, however momentary contact with any part of it should not cause injury. Precautions should be taken to ensure that prolonged contact with the towel rail cannot occur. Particular care should be taken in confined areas where accidental prolonged contact with the rail could be more likely.

This towel rail is to be installed so that any control switches or built in controls cannot be touched by a person in the bath or shower in conformance with all relevant and applicable wiring rules.

CAUTION - This appliance is not intended for use by children or other persons without assistance or supervision if their physical, sensory or mental capabilities prevent them from using it safely. Children should be supervised to ensure that they do not play with the appliance.

This appliance should only be used to dry materials that have been washed in water using commonly available detergents.

If the supply cord is damaged, the element and cord assembly must be replaced by the manufacturer or their service agents

IMPORTANT - If the towel rail is to be installed in a place used by the public, a warning notice should be placed adjacent to the rail advising that the surface can be hot.

Electrical Installation

If fitted in a room containing a bath or shower, to comply with the current I.E.E. Regulations, a cable outlet will be necessary with the supply to the heater controlled by a double-pole pull-cord switch. The pull-cord switch must have a contact separation of at least 3mm for each pole. The body of the switch should also be situated as to be normally inaccessible to a person using a bath or shower.

IMPORTANT - Protect the electrical connection on the element whilst installing the towel rail. The towel rail must be permanently fixed to the wall using the wall brackets supplied. The rail must be mounted vertically as shown. It is not suitable to be horizontally mounted.

Wall mounting

The wall mounting accessory pack contains:
 4 mounting brackets (Sleeve & Inner with Rail Clamp)
 4 wall mounting screws/washers/wall plugs
 4 Philips head screws – Short
 1 Air Vent Plug
 1 Blank plug

Please ensure that the fixings used to mount the towel rail are suitable for the wall type the rail is being fixed onto. The fixings supplied may not be suitable for all wall types.

WARNING - The towel rail is heavy, see weights in table 2. Care must be taken when lifting and fitting the towel rail.

Width	400			500			600		
Height (M)	0.8	1.1	1.6	0.8	1.1	1.6	0.8	1.1	1.6
Weight In Kg	Water Fed Towel Rail								
	4.3	5.3	7.0	4.3	5.9	7.8	5.5	6.6	8.5
	Electrically Heated Towel Rail								
	7.8	10.2	13.3	8.9	11.6	15.2	10.0	13.0	16.9

Table 2

Figure 1 below shows how the bracket is assembled with the towel rail and wall.

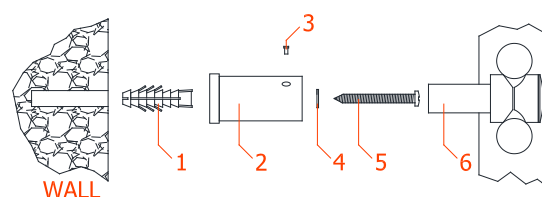


Diagram 2

The Towel rail should be mounted at least 100mm off the floor and at least 50mm away from any over-hanging surfaces (shelves cupboards etc.)

Using the dimensions given in Table 1, mark up the bracket positions on the wall. The minimum height from the floor to the Centre of D is 186mm, this height will mount the bottom of the rail 100mm off of the floor, however larger distances are possible.

Drill the mounting holes and insert the appropriate fixing for the wall type.

Using a suitable fixing or the screw and washer supplied (parts 4&5), mount the outer sleeve of the bracket (Part 2) onto the wall with the hole for screw 3 pointing upwards.

Mount the Inner Sleeve (part 6) onto the towel rail in the locations shown on diagram 1.

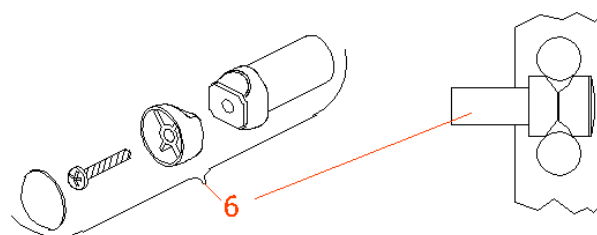


Diagram 3

The Inner sleeve is constructed of 3 parts and a fixing screw. The outer and inner parts of the rail clamps go in between the rails and are screwed together loosely until the rail is fully mounted. See Diagram 3.

Lift the towel rail with the inner sleeve assemblies in the approximate position and align with the outer sleeves that were previously fixed to the wall.

When all the inner sleeves are inserted correctly into the outer sleeves of the brackets tighten the screws on the inner sleeves and install the screw cover caps.

The small Phillips head screws (part 3) can now be installed into the screw holes in the outer sleeves.

When the towel rail is the desired distance from the wall, the small Phillips head screws can be tightened to fix the rail securely

Operation

Once powered the heat will be distributed along each of the rails. Some variation in the temperature across the surface of the rail is also normal. When the appliance is covered the heating pattern of the rails may alter, and generally temperatures at the upper part of the towel rail will rise.

The towel rail may be switched on and off at the isolating wall switch or operated by means of a pull cord switch.

A further means of control would be to link the towel rail to a room thermostat and/or timer. A room thermostat will ensure that the rail automatically switches off in warmer weather. A timer will allow for short periods of use.

Note: If the towel rail is located in a bathroom the adjustment for these controls must be located outside the bathroom.

It is recommended that for efficient drying, no more than two layers of towels or similar fabric should be draped over the rail. Items should be placed evenly over the whole surface of the rail where possible.

It is not advisable to leave very damp towels or clothes on the towel rail when it is not in use, as this may in time, affect the finish.

The rail, although hot to the touch is not hot enough to scorch or burn fabrics. However, soap or detergents that remain in articles after washing can cause discoloration. Care should be taken to thoroughly rinse articles before airing.

Maintenance

There are no user serviceable parts on the towel rail. The rail is filled with a precise quantity of special liquid and should never need draining or refilling. Repairs requiring the opening of the liquid-tight seal must only be made by the manufacturer's Service Agent. Any leakage must be reported to the manufacturer's Service Agent.

The element and cable are a single unit and any maintenance, must be carried out by the manufacturers Service Agent using the recommended parts.

Cleaning

The finish on your towel rail can be maintained by occasionally wiping over with a damp cloth and lightly finishing with a soft dry cloth. This should only be carried out when the rail is cold. Do not use abrasive cleaning powders as this could damage the surface finish.

Recycling



For electrical products sold within the European Community. At the end of the electrical products useful life it should not be disposed of with household waste. Please recycle where facilities exist. Check with your Local Authority or retailer for recycling advice in your country.

Guarantee

Your appliance is guaranteed for 2 years from the date of purchase – during this period we will repair or exchange, at our discretion, any faulty or defective parts providing the appliance has been used in accordance with the operating & installation instructions and has not been misused or mistreated in any way.

Any unauthorised repair or attempted repair will invalidate the guarantee. You may be asked to return the product to our workshop for inspection to establish whether the fault is covered under the guarantee. The guarantee is valid in the UK and Ireland only. This guarantee is additional to your statutory rights. In the unlikely event of a problem with your appliance, please contact your supplier.

Should you require after sales information or assistance with this product please go to www.atc.ie

Please retain your receipt as proof of purchase.

ATC Electrical & Mechanical
ATC House
Broomhill Drive
Tallaght
Dublin
D24 EF99

UK: 0203 5649164
Ireland: 01 467 8301

Web: www.atc.ie
Email: sales@atc.ie

