

UNITED
KINGDOM

Energy Efficient Electric Heating and Hand Dryers



atc[®]

Our Vision

Our strategic vision is to create and sustain **positive long term relationships** with our customers by helpful, **effective response** to their ongoing requirements by providing the most up-to-date and **innovative products** and support in a constantly changing environment and market.



Our Core Values of **Quality, Service,** and **Customer Care** are primary to our day-to-day activities

Catalogue Index

We are ATC

Our Vision	Inside cover
The ATC Experience	1
Our Story	4
Timeline	5
ATC & Sustainability	6
Case Study 2025	8
Solar Technology	12
My ATC	14
Wholesaler Merchandising	16



Energy Efficient Hand Dryers 19

Which Hand Dryer to Use	20
FAQs	21
Tiger ECO Pure High Speed Hand Dryer	22
Tiger ECO High Speed Hand Dryer	24
Cheetah High Speed Hand Dryer	26
Puma High Speed Hand Dryer	28
Cub High Speed Hand Dryer	30
Panther ECO High Speed Hand Dryer	32
Premium Blade High Speed Hand Dryer	34
ECO Tap Washroom Range	36
Choose Hygiene. Choose HEPA	38
Cost Savings	39
CO ₂ Impact on the Environment	42



Thermal Electric Radiators 45

Thermal Electric Radiator Technology & Key Features	46
ATC Smart Technology	51
Sizing Guide & Heating Design	52
The Smart RF Family	54
Sun Ray RF Thermal Electric Radiators	62
Neptune Low Level Radiators	66
iLifestyle Thermal Electric Radiators	68
Varena Thermal Radiator	74
Thermal Radiator Features	76
Aeris ECO WiFi Ceramic Radiators	78
Smarter Heating	80
Bespoke Heating Design	82



Panel Heaters 85

Merida RF Digital Panel Radiators	86
Almeria ECO Digital Panel Heaters	88
Almeria ECO WiFi Panel Heaters	90
Somerset Electric Panel Heaters	94
ATC Academy	96
ATC at Robus	98



Electric Heating Range 101

Pacific Towel Radiators	102
Bavaro Downflow Heater	108
Mirror Defog Heaters	110
Bathroom Range	112
Welcome Overdoor Heater	114
What is Radiant Heating?	116
AuraWarm Radiant Ceiling Heaters	118
Hot Top Radiant Heater	122
HeatStat Digital Thermostat	124
Nexum RF Digital Thermostat	126



Outdoor Heating Range 129

Capri	130
Elba	132
Riviera	134
Sienna	136
Bluetooth Heating Controller	138
Heating Areas	140
Cost Savings	142



Water Heaters 145

Pacific Water Heaters	146
Installation Information	150
Why Use Unvented Water Heaters	151
Instantaneous Water Heater	152

Extras

Brochure Range	154
Find Your Local Sales Rep	155

Spare Parts 157

Our Story

ATC was established in 1991, and since then we have evolved into a solution-oriented company, designing, developing, producing and distributing Energy Efficient products in response to market needs.

We are focused on customer service and support and we strive to ensure a high level of dialogue-based cooperation with our customers.

Quality, safety and design are the key elements of ATC products. It is the core of our business and it ensures our customers' confidence in our products.

Our Products

We are very proud that our products are being used in many types of applications. We started in Ireland, but in recent years our products can also be found in the United Kingdom and Mainland Europe. We look forward to continuing our expansion into existing and new markets.

Innovation

Since 1991 there have been many advancements and changes in product development and technologies. There have also been many changes in the way people carry out and transact their business.

We have embraced and taken on many of these new technologies. However, our strength lies in our know-how and company structure, which allows us to respond quickly and flexibly to both specific and generalised customer requests.

Acquired by LED Group

In January 2025, ATC was acquired by the LED Group. This is an exciting time for the company as it joins the Robus, Fusebox and National Lighting companies as part of the overall group.

We look forward to continued success in the years ahead.

LED GROUP

Quality Makes the Difference



<p>1991 ATC Opens for business at the Dunlop Centre, Adelaide Road as exclusive partners to Vortice Ventilation & Omron Electronics</p>	<p>1994 Due to business development & growth, ATC moved to a larger premises in Walkinstown, Dublin</p>	<p>1996 Due to business growth, ATC moved again to a larger premises in Tallaght, Dublin</p>	<p>2008 ATC opened its new head quarters at Broomhill Drive, Tallaght</p>
<p>1992 ATC Employed our very first External Sales Representative</p>	<p>1995 ATC achieved ISO 9001 Accreditation</p>	<p>2001 Incorporation of ATC Automation as a Division within the Group</p>	
<p>2009 ATC Automation appointed Omron Premium Partner Status</p>	<p>2014 ATC commences business in the UK</p>	<p>2015 Created our new Product Development & Quality Department to grow and expand the ATC range of energy efficient products</p>	<p>2017 Open our new UK Distribution Centre to improve and provide Next Day Service to our UK Customers</p>
<p>2012 The launch of the first ATC Branded Products in the market</p>	<p>2014 Open our first Energy Showrooms at ATC House</p>	<p>2017 ATC Lifestyle Radiator crowned the Winner of the EIFI Energy Efficient Product of the Year</p>	<p>2019 ATC won the EIFI Project of the Year for the installation of the Sun Ray Radiators at Aungier Street Student Accommodation</p>
<p>2019 Improving efficiencies and service with our 5S Accreditation</p>	<p>2019 Official Opening of the Energy Efficient Showroom & Training Hub at ATC House</p>	<p>2020 Introduction of the ATC Smart Logo for our new & developing range of Smart Products</p>	
<p>2021 - Celebrating 30 Years of ATC - ATC House reopens after Covid-19 pandemic - ATC Academy opens for visitors - Sustainable FSC product boxes are adopted for selected products</p>	<p>2022 ATC Wins Distributor of the Year at Ireland's Electrical Awards</p>	<p>2025 ATC was acquired by the LED Group. The business will continue to operate independently serving our customers in Ireland and the UK with the overall support from the LED Group.</p>	

ATC & Sustainability

Recyclable Packaging

We have recently adopted new FSC Certified cardboard packaging for selected products. The Forest Stewardship Council (FSC) is committed to protecting forests for future generations and helping to combat climate change.

Bleaches and pigments have been eliminated from this packaging, reducing chemical waste, which is a harmful pollutant.



100% Recycled Aluminium

All of the aluminium used in the manufacturing process is 100% recycled aluminium, contributing to a circular economy and minimising the exhaustion of natural sources. Just 5% of energy is used through the production of recycled aluminium.



WEEE

Our electrical products are recyclable through WEEE – Waste Electrical and Electronic Equipment recycling, which allows valuable resources including plastics, metals and glass to be recovered for further use in manufacturing and ensures hazardous waste is disposed of safely, helping to protect our environment.



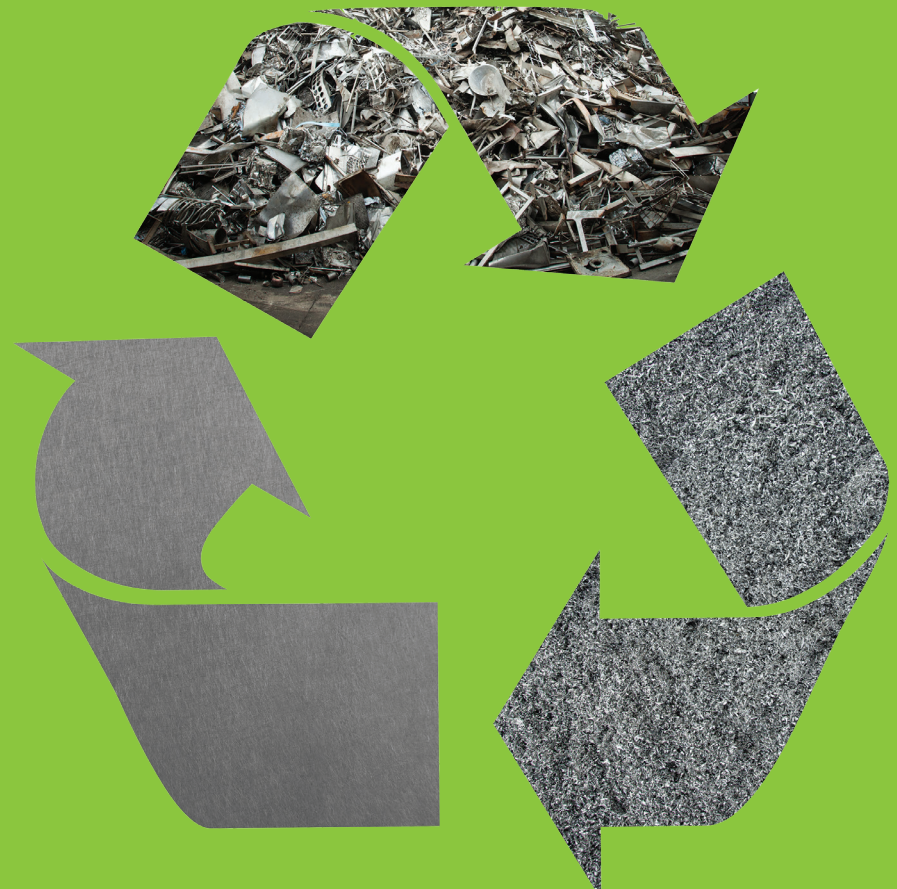
RoHS

All of our products are RoHS compliant, in conjunction with the EU's RoHS Directive for restricting the use of hazardous substances in electrical equipment to protect the environment and public health.



LOT 20 Compliant

Our thermal electric radiators use thermal emission oil for a quick and eco-friendly heat-up time. Built-in Open Window Technology prevents heat loss and saves energy.





Case Study April 2025

Introduction

To power the company Head Office and Warehouse

In the evolving landscape of sustainability, businesses are increasingly turning to renewable energy solutions to reduce their carbon footprint, cut costs, and future-proof their operations. ATC has made a significant investment in renewable energy to power its main office.

ATC installed a 50kW system powered by a Sungrow Commercial Inverter. This will reduce its energy consumption and environmental footprint.

Background:

The Move Towards Solar Energy

In early 2024, ATC took its first step towards sustainability to assess the viability of solar energy as a solution for the company's electricity needs. This initial investigation was an exploratory phase, giving ATC a chance to understand its energy costs and gauge the impact on the company's operational costs.

In April 2025, ATC made the strategic decision to install a state-of-the-art, 50kW solar power solution. This new system consists of 132 high-efficiency 550W solar panels, installed with a Sungrow Commercial inverter.

Project Overview:

System Specifications:

- **Solar System Capacity:** 50kW
- **Number of Panels:** 132 x 550W Solar Panels
- **Inverter:** Sungrow Commercial Inverter SG50CX-P2
- **Full Product Supply and Installation Cost:** €66,000
- **SEAI Grant:** €17,400

Annual Energy Usage:

- **2024 Electricity Usage:** 77,900kWh

Projected Energy Production from New System:

- **Annual Solar Yield:** 64,481kWh

With the Solar System now in place, ATC expects the solar panels to generate a substantial portion of their annual energy needs. Although the system won't fully cover the company's 77,900kWh usage, the 64,481kWh of energy produced by the solar array will significantly reduce reliance on the grid. This means ATC will see substantial savings on energy costs while reducing their environmental impact.



Environmental Impact

A Step Towards Sustainability

One of the most compelling reasons ATC opted for a Solar PV system was to reduce its carbon footprint and contribute to a cleaner planet. The environmental benefits of the new solar installation are substantial and the Sungrow iSolarCloud app projects the following savings:

- **CO₂ Reduction:** The 64,481kWh of electricity generated by the new system will reduce carbon emissions by approximately 64.4 metric tons (0.997 kg CO₂ per kWh).
- **Coal Savings:** The electricity generated will save an estimated 26,042 kg of standard coal (0.404 kg per kWh).

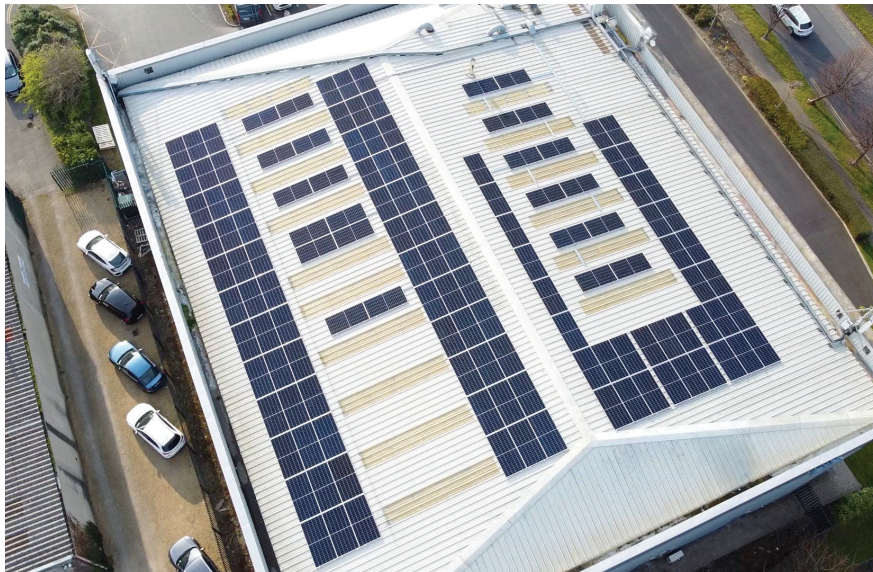
- **Tree Planting Equivalent:**

This energy production is equivalent to planting around 3,495 trees (0.054 trees per kWh).

These figures not only highlight the environmental advantages of solar energy but also showcase ATC's commitment to making a positive impact on the planet.

Return on Investment

The financial investment in the new solar power system amounted to €66,000, with ATC benefiting from a grant of €17,400 from the Sustainable Energy Authority of Ireland (SEAI), bringing the net investment to €48,600. Given the energy savings, ATC projects a return on the investment of approximately 40 months (a little over 3 years).



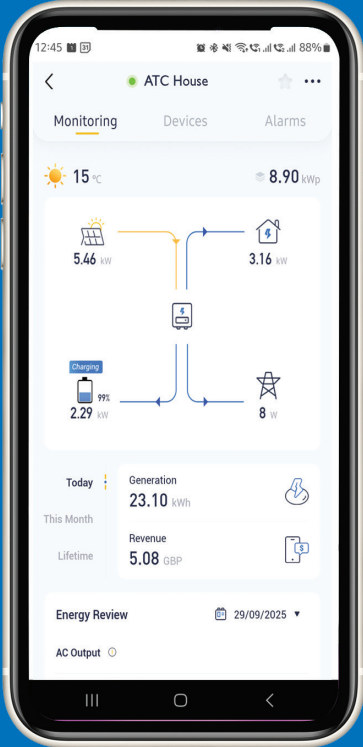
ATC House – Solar Panel Roof Layout

Solar Technology



- 01 Solar Panels
- 02 Solar Inverter
- 03 Battery
- 04 Switch Board
- 05 Electricity Grid
- 06 AC Car Charger

The above image showcases solar technology in a residential setting. Solar panels capture energy from the sun, which is converted into electricity by inverters, and used to power home appliances and heating systems. Even electric vehicles are covered, through the use of a domestic EV charger. Surplus energy which is not used is diverted to battery storage or redistributed to the electricity grid.



SEMS+App

Goodwe SEMS+ is a user-friendly App* which offers functions such as PV system monitoring, plant device management, troubleshooting notifications and remote control, all available at a touch of a fingertip. Stay up to date with additional features such as dynamic electricity prices and product updates, and more.

Exciting News!

Introducing Our New Rewards App MyATC – The App for Contractors

We're thrilled to announce the launch of our brand-new Rewards App – designed with you in mind! Now, every time you purchase an ATC product in your Electrical Wholesaler, you'll earn points that can be redeemed for exclusive offers and member-only perks.

Here's what you can expect:

- Earn points with every purchase
- Unlock personalised rewards
- Enjoy a seamless, easy to use app experience

Download the app today and receive 100 points Free for signing up.

You can also start earning rewards right away – because loyalty should be rewarding.

Sign up today at [Myatc-app.com](https://myatc-app.com)

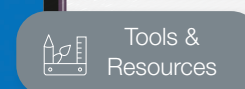
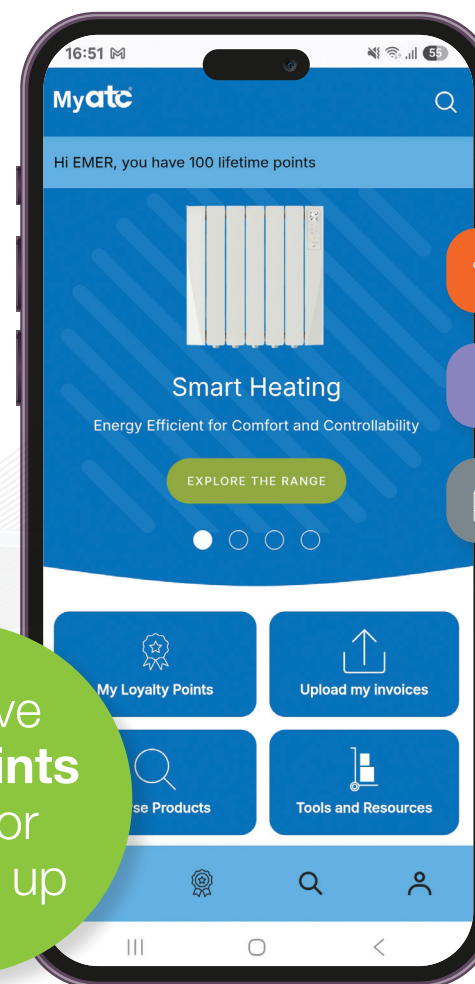
**Thank you for being a valued customer.
We can't wait for you to try it!**

Scan QR to download the MyATC app



Some outlets you can visit to claim 'Your Rewards'
Starbucks, Café Nero, Tesco, M&S, TK Max and Just Eat.

Myatc[®]



Receive
100 points
Free for
signing up

Wholesaler Merchandising Opportunity



Marketing Support

Electric Heating Sizing Guide

Smart Connectivity	Wi-Fi Connected Radiator	Floor Area (m ²)	Power (kW)	Power (kW)	Power (kW)
atc	atc	Up to 100m ²	Up to 3000W	500W	2000W
		Up to 150m ²	Up to 4500W	1000W	3500W
		Up to 200m ²	Up to 6000W	1500W	4500W
		Up to 250m ²	Up to 7500W	2000W	5500W
Wi-Fi Connected Panel Heater	atc	Up to 100m ²	Up to 3000W	500W	2000W
		Up to 150m ²	Up to 4500W	1000W	3500W
		Up to 200m ²	Up to 6000W	1500W	4500W
		Up to 250m ²	Up to 7500W	2000W	5500W
Quick to install and easy to program	atc	Up to 100m ²	Up to 3000W	500W	2000W
		Up to 150m ²	Up to 4500W	1000W	3500W
		Up to 200m ²	Up to 6000W	1500W	4500W
		Up to 250m ²	Up to 7500W	2000W	5500W

Introducing Our New Remote App MyATC - The App for Contractors



Tablet Stand Hospitality

Tablet Stand Heating



Hoodie



Beanie



Point of Sale Hand Dryers



Point of Sale Outdoor Heating

Did you Know?
1 ton of paper towels
is the equivalent of
17 trees

Dry your Hands the Eco-Friendly Way

Energy Efficient Hand Dryers

Which Hand Dryer to Use	20
Frequently Asked Questions	21
Tiger ECO Pure High Speed Hand Dryer	22
Tiger ECO High Speed Hand Dryer	24
Cheetah High Speed Hand Dryer	26
Puma High Speed Hand Dryer	28
Cub High Speed Hand Dryer	30
Panther ECO High Speed Hand Dryer	32
Premium Blade High Speed Hand Dryer	34
ECO Tap Washroom Range	36
Choose Hygiene. Choose HEPA.	38
Cost Savings	39
CO ₂ Impact on the Environment	43

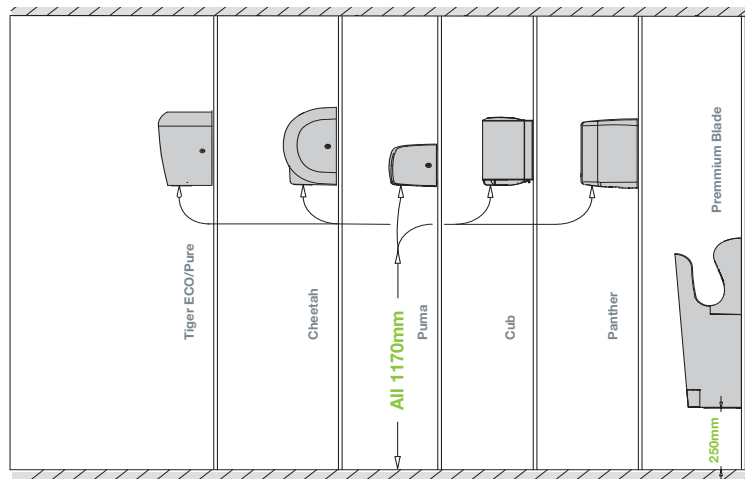


Which Hand Dryer to use?

We provide the most comprehensive range of Energy Efficient Hand Dryers on the market

	Tiger Eco Pure	Tiger ECO	Cheetah	Puma	Cub	Panther ECO	Premium Blade
Energy Efficient with Low Running Costs	●	●	●	●	●	●	●
Variable Outputs KW	650/1400	650/1400	1400	600/1300	600/1300	700/1400	700/2000
HEPA Filtration	Built In	Optional				Optional	●
Air Filtration	●	●	●	●	●	●	●
UV Sterilisation				●			●
Drying Time	15 Seconds	15 Seconds	12 Seconds	15 Seconds	15 Seconds	15 Seconds	15 Seconds
Low Usage	●			●	●		
Medium Usage	●	●	●				●
High Usage	●	●					
Vandal Resistant						●	
Approvals	UKCA & CE	UKCA & CE	UKCA & CE	UKCA & CE	UKCA & CE	UKCA & CE	UKCA & CE
Warranty	2 Years	2 Years	2 Years	2 Years	1 Year	5 Years	3 Year
IP Rating	IP13	IP13	IP13	IP13	IP13	IPX1	IP24

Hand Dryer mounting heights



Frequently Asked Questions

What's the difference between the High Speed Cub and the Tiger Eco Hand Dryers?



High Speed Cub

Tiger ECO

	High Speed Cub	Tiger ECO
15 second drying time	✓	✓
LED countdown indicator	✓	✓
Low running costs	✓	✓
Available in various finishes	✓	✓
Suited to areas of low traffic	✓	✓
Suited to areas of medium to high traffic	✗	✓
Switchable heating element on/off	✓	✓
Compact high speed hand dryer	✓	✗
Optional HEPA filter available	✗	✓
Long life brush motor	✗	✓

Hand Dryer Finishes



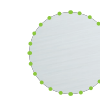
White



Black



Stainless Steel



Polished Steel



Tiger ECO Pure High Speed Hand Dryer

Total Hygiene Protection



Key Features Include:

- 15 second drying time
- Low running costs
- Suitable for areas of medium to high traffic
- Switchable heating output
- Built-In HEPA Filter
- LED Countdown Indicator
- Available in mirror polished stainless steel or white
- HEPA Change Indicator



Sleek high speed hand dryer perfect for areas of medium to high footfall. The built-in HEPA filter captures 99.9% of harmful particles for effective and efficient hand drying.

Description

Product Code	Z-4145HP	Z-4145HW
Finish	Polished Steel	White
Warranty	2 Years	2 Years
Activation	Automatic	Automatic
Cover Material	Polished 304 Stainless Steel	Painted 304 Stainless Steel

Electrical Specifications

Voltage	220/240V
Frequency (Hz)	50Hz
Motor Type	Brushed Motor
Power Output	1400 Watts
Motor Power	650 Watts
Heating Power	750 Watts/off
Amps	6.1A
Sensor	Fixed 15-20mm
Drying Time	15 seconds
Air Speed	70m/s
Air Volume	122.4m ³ /h
Filter	HEPA Filter

Built-in HEPA Filter removes 99.9% of particles down to 0.3µm

Noise Level 70dB(A) @1m

Approvals



Safety Features

Motor Thermal Protection	100°C
Heater Thermal Protection	100°C
Time Protection	45 seconds
Cover Screws	Vandal Resistant
Protection	IP13

Dimensions and Weight

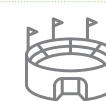
Width	302mm
Height	312mm
Depth	172mm
Weight	4.1kg



Commercial



Hospitality



Sports & Leisure



Education



Healthcare



Dries Hands in
15 Seconds



Annual CO₂
Emissions



Saving Energy
Reducing the
Carbon Footprint



Built-in HEPA Filter



YEAR
WARRANTY



Tiger ECO

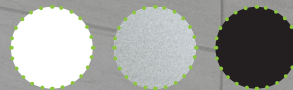
High Speed Hand Dryer

Ultra modern design



Key Features Include:

- 15 second drying time
- Low running costs
- Suitable for areas of medium to high traffic
- Switchable heating output
- HEPA filter (Optional)
- LED Countdown Indicator
- Available in brushed stainless steel, white and matt black
- Long life brush motor



Sleek high speed hand dryer perfect for areas of medium to high footfall. The optional HEPA filter captures 99.9% of bacteria for effective and efficient hand drying.

Description

Product Code	Z-3145M	Z-3145W	Z-3145B
Finish	Stainless Steel	White	Matt Black
Warranty	2 Years	2 Years	2 Years
Activation	Automatic	Automatic	Automatic
Cover Material	Stainless Steel 304	Painted Steel 304	Painted Steel 304

Electrical Specifications

Voltage	220/240V
Frequency (Hz)	50Hz
Motor Type	Brushed Motor
Power Output	1400 Watts
Motor Power	650 Watts
Heating Power	750 Watts/off
Amps	6.1A
Sensor	Fixed 15-20mm
Drying Time	15 seconds
Air Speed	70m/s
Air Volume	122.4m ³ /h
Filter	Filter Included
Optional HEPA Filter removes 99.9% of particles down to 0.3µm	

Noise Level

70dB(A) @1m

Approvals



Safety Features

Motor Thermal Protection	100°C
Heater Thermal Protection	100°C
Time Protection	45 seconds
Cover Screws	Vandal Resistant
Protection	IP13

Dimensions and Weight

Width	302mm
Height	312mm
Depth	172mm
Weight	4.1kg



Commercial



Hospitality



Sports & Leisure



Education



Healthcare



Dries Hands in 15 Seconds



Annual CO₂ Emissions



Saving Energy Reducing the Carbon Footprint



Optional HEPA Filter



2 YEAR WARRANTY



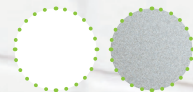
Cheetah High Speed Hand Dryer

Elegant, hygienic and cost effective



Key Features Include:

- 15 second drying time
- Low running costs
- Suitable for areas of medium traffic
- Available in brushed stainless steel and white



A durable high speed hand dryer, perfect for areas of medium level footfall, such as service stations or convenience stores.

Description

Product Code	Z-2281M	Z-2281W
Finish	Stainless Steel	White
Warranty	2 Year	2 Year
Activation	Automatic	Automatic
Cover Material	Stainless Steel 304	Painted Steel 304

Electrical Specifications

Voltage	220/240V
Frequency (Hz)	50 / 60Hz
Motor Type	Brush Type
Power Output	1400 Watts
Motor Power	650 Watts
Heating Power	750 Watts
Amps	5.8A
Sensor	Fixed
Drying Time	12 seconds
Air Speed	65 m/s
Air Volume	133m ³ /h

Noise Level 70dB (at 1m)

Approvals



Safety Features

Motor Thermal Protection	Turns unit off at 100°C
Heater Thermal Protection	Turns unit off at 142°C
Time Protection	45s Auto Shut Off
Cover Screws	Vandal Resistant
Protection	IP13

Size and Weight

Width	295mm
Height	320mm
Depth	170mm
Weight	4.5kg



Commercial



Hospitality



Sports & Leisure



Healthcare



Education



Dries Hands in 15 Seconds



Annual CO₂ Emissions



Saving Energy
Reducing the
Carbon Footprint



YEAR WARRANTY



Puma High Speed Hand Dryer

Low energy, compact design



Key Features Include:

- 12–15 second drying time
- Low running costs
- Suitable for areas of low traffic
- Switchable heating output
- Anti-Bacterial UV Sterilisation
- Durable Stainless Steel
- Compact design

A sleek and compact high speed hand dryer ideal for single use washrooms in areas of low footfall.

Description

Product Code	Z-2000M
Cover Material	Stainless Steel 304
Finish	Matt Stainless Steel
Warranty	2 Years
Activation	Automatic

Electrical Specifications

Voltage	220/240V
Frequency (Hz)	50 / 60Hz
Brush Motor	25000 rpm
Power Output	1300 Watts
Motor Power	600 Watts
Heating Power (adjustable)	700 W / Off
Amps	5.7A
Sensor	250mm Fixed
Drying Time	15 seconds
Air Speed	65 m/s

Noise Level

70db at 1m

Approvals



Safety Features

Motor Thermal Protection	Turns unit off at 100°C
Heater Thermal Protection	Turns unit off at 100°C
Time Protection	45s Auto Shut Off
Cover Screws	Vandal Resistant
Protection	IP13

Size and Weight

Width	250mm
Height	175mm
Depth	152mm
Weight	3.0kg



Commercial



Hospitality



Sports & Leisure



Healthcare



Education



Dries Hands in 15 Seconds



Annual CO₂ Emissions



Saving Energy Reducing the Carbon Footprint



YEAR WARRANTY



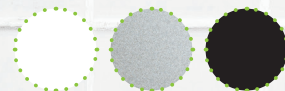
High Speed Cub Hand Dryer

Low energy, unique design



Key Features Include:

- 15 second drying time
- Low running costs
- Suitable for areas of low traffic
- Switchable heating output
- LED countdown indicator
- Available in brushed stainless steel / matt black / white
- Compact Design



Unique and sleek in design, this compact high speed hand dryer is best placed in areas of low footfall. The perfect fit across a range of industries.

Description

Product Code	Z-2651M	Z-2651BL	Z-2651WH
Cover Material	Stainless Steel 304	Stainless Steel 304	Stainless Steel 304
Finish	Brushed	Matt Black Painted	White Painted
Warranty	1 Year	1 Year	1 Year
Activation	Automatic	Automatic	Automatic

Electrical Specifications

Voltage	220/240V
Frequency (Hz)	50 / 60Hz
Motor Type	Brush Type
Power Output	1300 Watts
Motor Power	600 Watts
Heating Power	700W / Off
Amps	5.7A
Sensor	Fixed
Drying Time	15 seconds
Air Speed	65 m/s

Noise Level

72dB at 1m

Approvals



Safety Features

Motor Thermal Protection	Turns unit off at 100°C
Heater Thermal Protection	Turns unit off at 100°C
Time Protection	45s Auto Shut Off
Protection	IP13

Size and Weight

Width	153mm
Height	280mm
Depth	162mm
Weight	3.2kg



Commercial



Hospitality



Sports & Leisure



Healthcare



Education



Annual CO₂ Emissions



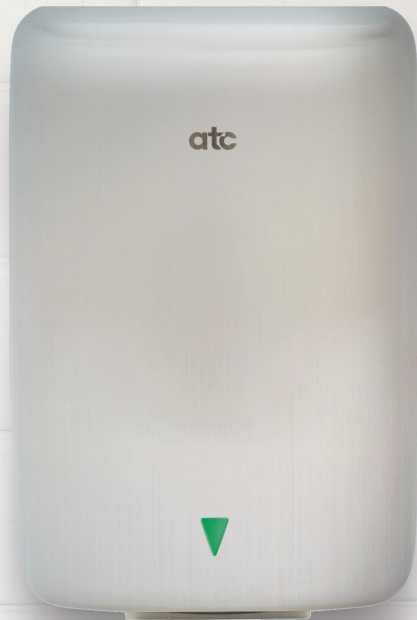
Saving Energy
Reducing the
Carbon Footprint



1
YEAR
WARRANTY

Panther ECO High Speed Hand Dryer

The preferred choice for high usage wash rooms



Key Features Include:

- 12-15 second drying time
- Low running costs
- Suitable for high traffic areas
- Switchable heat / speed setting
- Long life brush motor
- HEPA Filter (Optional)
- Vandal resistant
- Available in matt stainless steel



With a 5 year warranty, this durable high speed hand dryer is effective – perfect for high traffic areas such as shopping centres, fast food restaurants or sports stadia. The optional HEPA filter captures 99.9% of bacteria.

Description

Product Code	PANZA06
Cover Material	Stainless Steel 304
Finish	Matt Stainless Steel
Warranty	5 Years
Activation	Automatic

Electrical Specifications

Voltage	220–240Vac
Frequency (Hz)	50 / 60Hz
Brush Motor with Dual Ball Bearings	12000-18000RPM (adjustable)
Power Output (adjustable)	1400 Watts
Motor Power (adjustable)	350W / 700 Watts
Heating Power (adjustable)	350W / 700 Watts
Amps	6.1A
Sensor Range (automatically adjustable)	100–230mm
Drying Time	12–15 Seconds
Air Flow m/s	74-87m/s
Filter	Complete with filter

Noise Level

Min 70dB – Max 73.7dB at 1m

Approvals



Safety Features

Motor Thermal Protection	Auto Resetting turns off at 135°C
Heater Thermal Protection	Auto Resetting turns off at 85°C
Time Protection	60s Auto Shut Off
Cover Screws	Vandal Resistant
Protection	IPX1

Size and Weight

Width	205mm
Height	287mm
Depth	180mm
Weight	5.8kg



Commercial



Hospitality



Sports & Leisure



Healthcare



Education



Annual CO₂ Emissions



Saving Energy
Reducing the
Carbon Footprint



5
YEAR
WARRANTY



Premium Blade High Speed Hand Dryer

Elegant, hygienic and cost effective



Key Features Include:

- 10-15 second drying time
- Low running costs
- Suitable for areas of medium traffic
- Replaceable HEPA filter
- Anti-Bacterial UV Sterilisation
- Available in silver
- Long life brushless motor

Reach new hand drying heights with the leading ATC hand dryer – long life, sleek silver design with built-in anti-bacterial UV sterilisation and HEPA filter.

Description

Product Code	Premblade15
Finish	Silver
Warranty	3 Years
Activation	Automatic

Electrical Specifications

Voltage	220V - 240V
Frequency (Hz)	50 / 60Hz
Motor Type	Brushless Long life
Power Output (W)	2000 Watts
Motor Power (W)	700 Watts
Heating Power (W)	1300 Watts
Amps (A)	8.7A
Sensor	Fixed
Drying Time	10 – 15 seconds
Air Speed	90 – 95 m/s

Noise Level	70dB (at 1m)
--------------------	--------------

Filter	Replaceable HEPA Filter
---------------	-------------------------

Approvals	UK CE
------------------	-------

Safety Features

Motor Thermal Protection	Turns unit off @ 95°C
Heater Thermal Protection	Turns unit off @ 100°C
Time Protection	25s
Cover Screws	Vandal Resistant
Protection	IP24

Dimensions and Weight

Width	300mm
Height	700mm
Depth	215mm
Weight	9.5kg





ECO Tap

Bathroom Range

Soap – Wash – Dry

Wash & Dry
your hands
in 40
seconds!



Key Features Include:

- Taps installed in situ within sink, or above
- Hygienic, no-touch automatic operation
- Simple to use
- Energy saving, temperature control hand dryer
- Quiet operation
- Concealed mechanisms for easy maintenance

With a sleek, modern design the ECO Tap is designed to complement high traffic bathrooms as a complete set of soap dispenser, auto tap, and high speed hand dryer.

Product Codes:

Sink Mounted

ATC-ECOTAP-D
 ATC-ECOTAP-D-FAUCET
 ATC-ECOTAP-D-SOAP

Wall Mounted

ATC-ECOTAP-W
 ATC-ECOTAP-W-FAUCET
 ATC-ECOTAP-W-SOAP

Description

Cover Material	304 Stainless steel
Finish	Brushed
Activation	Automatic

Electrical Specifications Hand Dryer

Voltage	220 - 240Vac
Frequency (Hz)	50-60Hz
Motor speed	22000-29000RPM
Power Output	840-1000W
Motor Power	500W
Heating Power (off/min/max)	0/340-500W
Amps	3.8-4.2A
Sensor Range	130mm ± 20mm (Auto Adjust)
Drying Time	12-15 Second

Wall / Sink

Approvals

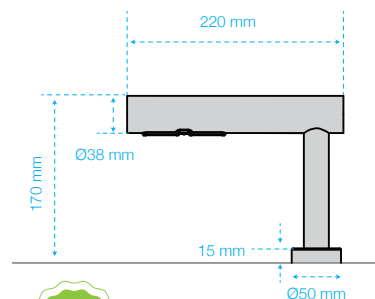


Safety Features

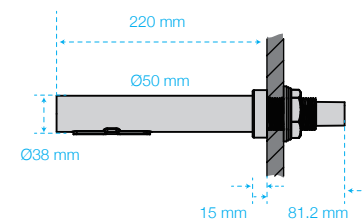
Motor Thermal Protection	102°C Auto Resetting
Heater Thermal Protection	139°C Auto Resetting
Time Protection	60s Auto shut off
Cover	304 Stainless steel
Protection	I.P. 35

Dimensions

Sink mounted



Wall mounted



YEAR
WARRANTY



Choose Hygiene. Choose HEPA.

What is 'HEPA'?

HEPA stands for 'High Efficiency Particle Arrestor', which works to trap tiny particles (up to 0.3 micrometers in diameter) found in the air.

Why they're great

HEPA filters capture 99.9% of harmful particles, giving you a seamless, hygienic hand drying experience.

Maintenance

You change your coffee filter regularly, right? The same applies to HEPA filters. Make sure to change your HEPA filter every 6 months – those particles add up, and over time reduce the effectiveness of the filter.

A closer look

HEPA filters are composed of thin fibres of glass and carbon-activated material. The result is a thick, paperlike material arranged in pleats. Particles passing through the air are trapped within this material.

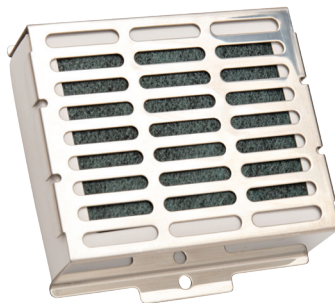
Did you know?

The Panther HEPA filter comes complete with an antibacterial layer and stylish stainless steel outer casing for a sleek finish.

Simply slide in or out for install and removal!



HEPA filter, Tiger ECO



HEPA filter, Panther ECO

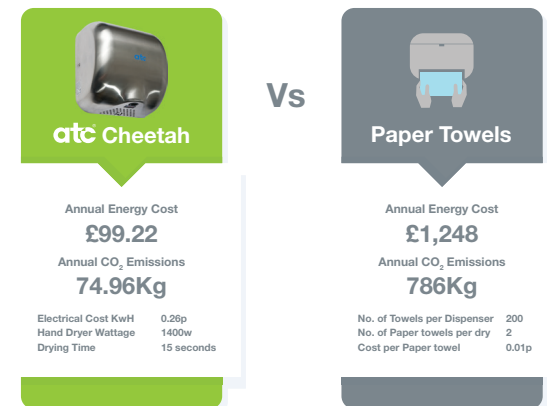
Cost Savings

Energy Cost Comparison



Savings per year
£1,148.78
 Based on 312 days
 200 dries per day

Energy Cost Comparison

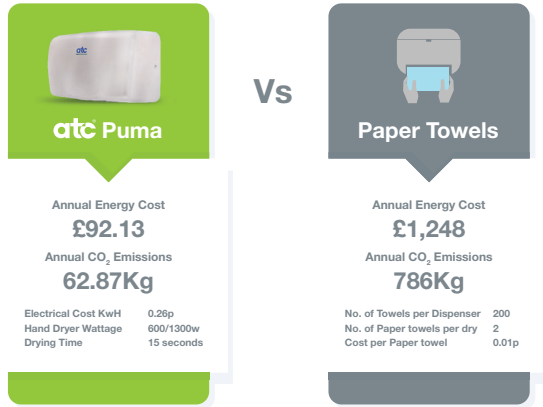


Savings per year
£1,148.78
 Based on 312 days
 200 dries per day

Figures shown are estimated for 2025 and are subject to change.



Energy Cost Comparison



Savings per year
£1,155.87
Based on 312 days
200 dries per day

Energy Cost Comparison



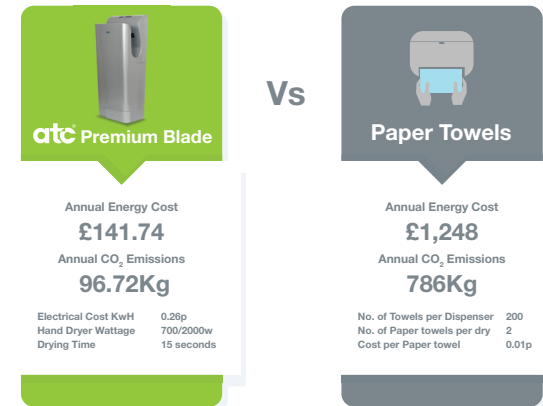
Savings per year
£1,148.78
Based on 312 days
200 dries per day

Energy Cost Comparison



Savings per year
£1,155.87
Based on 312 days
200 dries per day

Energy Cost Comparison



Savings per year
£1,106.26
Based on 312 days
200 dries per day

Figures shown are estimated for 2025 and are subject to change.

Figures shown are estimated for 2025 and are subject to change.

CO₂ Impact on the Environment

Carbon Emissions, otherwise known as greenhouse gas emissions, are the main contributors to climate change and global warming.

The concerning increases in the burning of fossil fuels directly correlates to the increase of carbon dioxide levels in the atmosphere and in turn the rapid increase of global warming.

Fossil Fuel Combustion

The largest source of carbon dioxide emissions is from the combustion of fossil fuels. This produces 87% of the human carbon dioxide emissions. Burning these fuels releases energy which is most commonly turned into electricity, heat or power for transportation. Some examples of where they are used are in industrial and commercial facilities such as Airports, Factories, Shopping Centre, Offices and smaller locations such as Gyms, Coffee Shops and Restaurants.

What Should Happen?

It is the responsibility of the management in all commercial and industrial organisations to implement a plan to reduce their annual carbon emissions.



How can ATC Energy Efficient Hand Dryers Help?

ATC provides the widest and most complete range of Energy Efficient Hand Dryers on the market.

When you visit a washroom you want to dry your hands quickly and hygienically.

We provide all the options; from high usage locations such as Airports, Shopping Centres and Sports Stadia to medium usage in Offices, Hotels and Coffee Shops. Our hand dryers are low noise and provide a range of energy outputs that can be controlled by the facilities personnel.

On the following pages, we demonstrate the energy savings and CO₂ emissions of our hand dryers compared to using Conventional Hand Dryers or Paper Towels.



Figures shown are estimated for 2025 and are subject to change.

Eco-Friendly

Our thermal electric radiators use thermal emission oil for a quick and eco-friendly heat-up time. Built-in Open Window Technology prevents heat loss and saves energy.



EcoDesign
Lot 20 Compliant

Thermal Electric Radiators

Thermal Electric Radiator Technology & Key Features	46
ATC Smart Technology	51
Sizing Guide & Heating Design	52
The Smart RF Family	54
Sun Ray RF Thermal Electric Radiators	62
Neptune RF Low Level Radiators	66
iLifestyle Thermal Electric Radiators	68
Varena Thermal Radiator	74
Thermal Radiator Features	76
Aeris ECO WiFi Ceramic Radiators	78
Smart Heating	80
Bespoke Heating Design	82



Thermal Electric Radiator Technology

Electric Heating: How it Works

ATC's Thermal Electric Range uses a combination of convection and radiated heat, to provide an evenly distributed, comfortable warmth to any room.

Where to Use

Electric radiators are ideal for heating domestic and commercial settings, providing comfortable and consistent heat for spacious rooms.

Integrated Technology

These radiators can be used as stand-alone heaters or part of a whole-house heating system, **with selected heaters** operated by an app.

What's Inside?

Thermal electric radiators are oil filled, encased in aluminium, and contain an electric element.



Did You Know?

There are 3 basic methods of heat transfer: Conduction, Convection, and Radiation. ATC's Electric Thermal Radiator Range uses:

Convection

The transfer of heat through the physical movement of air or fluid from one location to another.

And

Radiation

The transfer of heat by electromagnetic waves.

Thermal Radiator or Panel Heater?

What Are the Key Differences?



Thermal Electric Radiator

iLifestyle

- Robust, modern design
- Uses combined convection & radiant heating method
- Provides gradual warmth
- Lower running costs

Provides great levels of comfort & warmth in spaces that are used frequently.

Ideal for:



Kitchens



Living Rooms



Receptions



Offices



Panel Heater

Almeria ECO

- Lightweight, sleek design
- Uses convection heating method
- Provides immediate heat
- Low purchase cost

Effectively heats spaces that are used sparingly

Ideal for:



Bedrooms



Utility Rooms



Staircase Landings



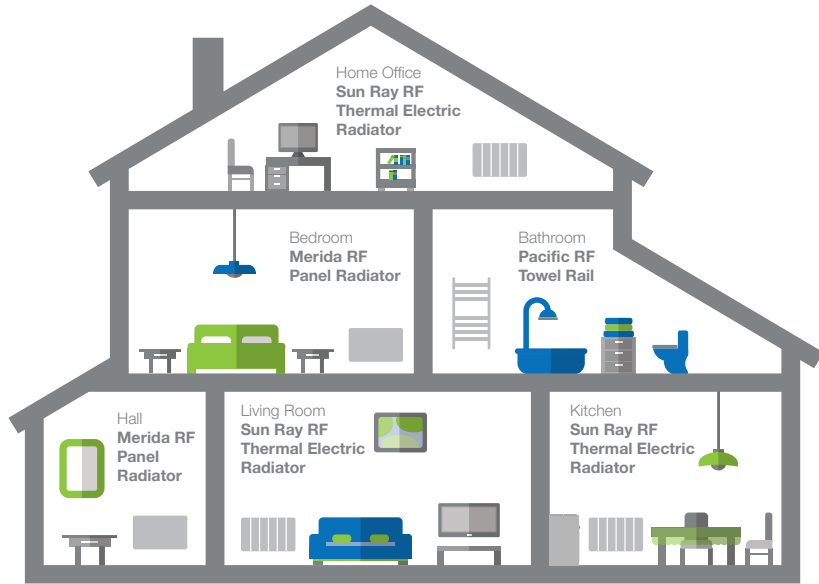
Spare Rooms



Thermal Radiators & Panel Heaters

Complementing one another in the home

The Smart RF Residence



By using a combination of thermal electric radiators and panel heaters in settings such as the home, you avail of a comfortable, inviting warmth specifically tailored for each room.

ATC's range of Smart RF products allow for connectivity and controllability with the ability to control up to 30 heaters from your mobile phone.

Thermal Electric Radiators and Panel Radiators can also work in tandem in settings such as hotels, offices, apartment residences, schools & universities, sports & leisure facilities, and more.

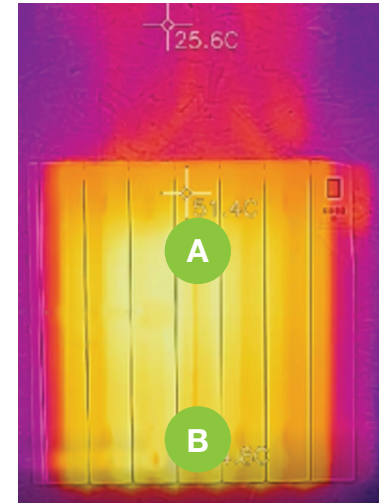
Suitable for:



Heat Distribution by Product Type

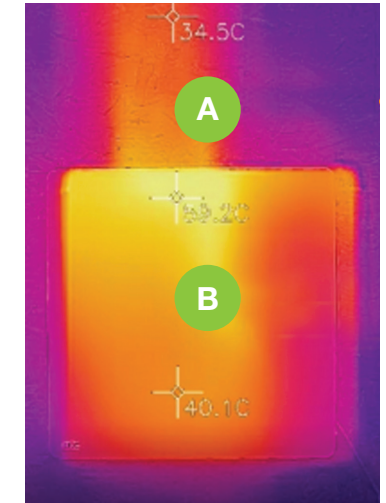
Results from the ATC test laboratory below demonstrate and compare the methods of heat distribution of different electric heaters.

ATC SunRay RF Thermal Radiator 750w



- A** Produces warm, controlled heat that reaches maximum temperature of 25.5 degrees.
- B** Heat is distributed evenly from heat source.

ATC Almeria-Eco Panel Heater 750w



- A** Produces dry heat of up to 34 degrees; suitable for places that are used sparingly.
- B** Heat is unevenly distributed from heat source.



Key Features of ATC Thermal Electric Radiators

Smart Controllability to 0.2°C

PID controllers use a control loop feedback method to control the heating element and are the most accurate and stable type of control system, with temperature accuracy to 0.2°C.

The ATC apps allow online programming from anywhere in the world. The radiator can also be controlled directly via controls on the heater.

Controllability & Connectivity

ATC Thermal Electric Radiators offer a wide range of connectivity options. We offer a diverse selection of products with varying levels of controllability and connectivity options. Choose from direct control via the radiator's control screen right through to Smart Technology that can be connected and controlled on-the-go via your smart device.

Accessible Technology

- Easy to read, modern TFT Display
- Manual Boost allows quick operation outside of programmed times
- Triac thermostat ensures long life & silent control
- Audible feedback confirms buttons which have been activated

Warranty Information

2 YEAR WARRANTY ELECTRONICS	10 YEAR WARRANTY ALUMINIUM	3 YEAR WARRANTY ELECTRONICS	20 YEAR WARRANTY ALUMINIUM
iLifestyle		Sun Ray RF & Neptune	

ATC Smart Technology

Connectivity:

The Power of RF Radio Frequency Technology

Radio Frequency (RF) products communicate using a smart and robust RF Mesh gateway which allows for a more reliable and longer-reaching communication path between the heaters and the gateway.

The Power of WiFi Direct Technology

Our WiFi Direct products operate directly between each heater and the WiFi router, ideal for single heaters with no need for a gateway

Easy to Program & Install

Ease of set-up is a key point in the design of the ATC Smart Family of products.

Simple and robust mounting hardware with secure locking brackets ensure that these products sit perfectly and safely within the spaces they provide warmth.

The set-up and programming of both WiFi Direct and RF-wireless systems is simple and intuitive, requiring minimal effort.

Easy to transport and easy to install.

Control at your Fingertips

Gain complete control over your heating systems through our ATC Smart Apps: Tevolve (RF) and ATC Cala (WiFi Direct).

- TRIAC electronic thermostat – accurate to 0.2°C
- PID Intelligent Control
- Open Window Feature
- Adaptive Start
- Frost Protection for holiday homes



ATC Tevolve App – RF Products



ATC Cala App – WiFi Direct Products



Electric Heating Sizing Guide

Floor Area (Standard 2.4M / 8Ft Ceiling Height.)		Very Low	Average	Excellent (New Build)
M ²	Square Ft			
Up to 3M ²	Up to 32Sq Ft	540W	300W	200W
Up to 6M ²	Up to 65Sq Ft	1080W	600W	400W
Up to 9M ²	Up to 97Sq Ft	1620W	900W	600W
Up to 12M ²	Up to 129Sq Ft	2160W	1200W	800W
Up to 15M ²	Up to 161Sq Ft	2700W	1500W	1000W
Up to 18M ²	Up to 194Sq Ft	3240W	1800W	1200W
Up to 21M ²	Up to 226Sq Ft	3780W	2100W	1400W
Up to 24M ²	Up to 258Sq Ft	4320W	2400W	1600W
Up to 27M ²	Up to 291Sq Ft	4860W	2700W	1800W
Up to 30M ²	Up to 323Sq Ft	5400W	3000W	2000W

A Heating Design service is available.

Please contact technical@atcelec.co.uk

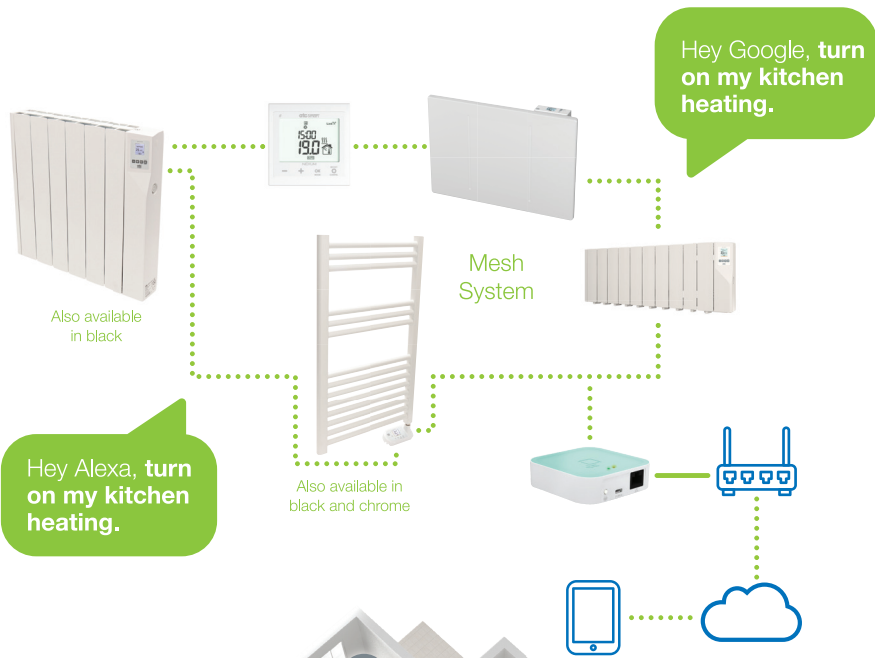
If calculated wattage falls below a key radiator size, ATC recommends that you choose the size up rather than down.

In the event of multiple radiators being required for a single room, please position evenly within the space for optimal heat distribution.

In buildings with little or no insulation, improvements in insulation levels should be considered before installing electric heating.

This is an estimated heating sizing guide. A heat loss calculation is required to determine accurate heating requirements.

The Smart RF Family



We design with you in mind.

Hey **Alexa**, turn on my kitchen heating.

Hey **Google**, turn on my kitchen heating.



Our connected products work with both Amazon & Google devices.



Switch to Electric & Save Money on your Heating Bills

Our heaters incorporate **Landlord Mode** functionality, ensuring that your heating is only on when needed.*



Almeria ECO Panel Heater

Find Out More...



Almeria ECO



RF Family

*The Landlord Mode function is available on the Almeria ECO Panel Heater and the RF Family range of heaters.



Sun Ray RF Electric Radiator



Merida RF Panel Heater



Manual Control on the Radiator

All radiators are equipped with a large TFT screen.

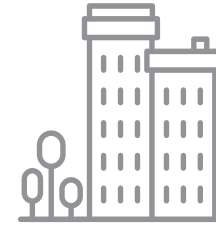


Merida
Digital Panel Radiator

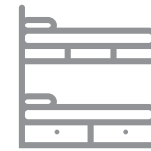


Pacific RF
Heated Towel Radiator

Take Control using the Tevolve App



Apartments
Change settings remotely



Hotels & Hostels
Controllability from reception





Download
for FREE on your mobile, tablet or computer device



Offices
Smart design



Holiday Homes
Frost protection for peace of mind

Voice Control
 amazon alexa
 Google Assistant

- Programmable 24/7 from anywhere in the world
- 3 program modes: **Comfort, Eco & Frost Protection**
- Can control up to 30 radiators
- Each radiator can be named
- Voice Control
- Monitor whole house energy usage with RF monitor



Monitor your Electricity Consumption

Purchase the Sun Ray RF with a Power Monitor to gain insight into your total electricity consumption in your home, office, hotel, etc. The Power Monitor measures electrical current, providing an hourly reading of your electricity consumption.

Couple this with the insights available thanks to the RF Tevolve app on your radiator energy usage, and you'll be on your way to honing your electricity usage and reducing your energy bills.



Power Monitor sold separately: Product Code RF-Monitor





Sun Ray RF Electric Thermal Radiators

Experience Unique



Key Features Include:

- Wireless control via Gateway and the Tevolve App
- Voice control compatibility with Amazon Alexa and Google Assistant
- Silent electronic thermostat – accurate to 0.2°C
- PID Intelligent Control
- Open Window Feature
- Adaptive Start
- Digital Program control
- Landlord Mode for control in hotels, student accommodation etc.
- Stand-alone control on radiator
- Frost Protection
- Pin code lock

The Sun Ray RF is an oil-filled thermal electric radiator which incorporates unique advanced technology and controllability in one radiator, leading the way in sustainable living.

Technical Details

Product Code	RF350	RF500	RF750	RF1000
Number of Fins	3	4	6	8
Power W	350	500	750	1000
Insulation Class	Class 1	Class 1	Class 1	Class 1
IP Protection	IP20	IP20	IP20	IP20
Voltage (AC)	230	230	230	230
Dimensions (H x W x D) mm	580 x 340 x 100	580 x 420 x 100	580 x 580 x 100	580 x 740 x 100
Approvals	UKCA, CE, RoHS	UKCA, CE, RoHS	UKCA, CE, RoHS	UKCA, CE, RoHS
Weight (kg)	6.9	8.8	12.5	16.4

Technical Details continued

Product Code	RF1250	RF1500	RF1800
Number of Fins	10	12	12
Power W	1250	1500	1800
Insulation Class	Class 1	Class 1	Class 1
IP Protection	IP20	IP20	IP20
Voltage (AC)	230	230	230
Dimensions (H x W x D) mm	580 x 900 x 100	580 x 1060 x 100	580 x 1060 x 100
Approvals	UKCA, CE, RoHS	UKCA, CE, RoHS	UKCA, CE, RoHS
Weight (kg)	20	23.9	23.9

RAL Colour: RAL9016

Popular Applications of the Sun Ray RF:





Technical Details (Sun Ray RF Black)

Product Code	RF750BL	RF1000BL	RF1500BL	RF1800BL
Number of Fins	6	8	12	12
Power W	750	1000	1500	1800
Insulation Class	Class 1	Class 1	Class 1	Class 1
IP Protection	IP20	IP20	IP20	IP20
Voltage (AC)	230	230	230	230
Dimensions (H x W x D) mm	580 x 580 x 100	580 x 740 x 100	580 x 1060 x 100	580 x 1060 x 100
Approvals	UKCA, CE, RoHS	UKCA, CE, RoHS	UKCA, CE, RoHS	UKCA, CE, RoHS
Weight (kg)	12.5	16.4	23.9	23.9

RAL Colour: RAL9005

Popular Applications of the Sun Ray RF:



RF Gateway



On-the-go control via the ATC Tevolve App





Neptune RF Electric Thermal Radiators

Simple to fit, operate & program!



Key Features Include:

- Wireless control via RF Gateway and Tevolve App
- Voice control compatibility with Amazon Alexa and Google Assistant
- 4 Operating Modes: Eco, Comfort, Frost Protection & Landlord
- Filled with high quality thermic emission oil for quick heat-up time

Improved Energy Efficiency:

- Adaptive Start Technology
- PID Intelligent Control
- Open Window Technology

The ATC Neptune RF Electric Thermal Radiator is a high quality, low level aluminium radiator designed for heating areas with low level walls or areas where space is restricted.

Technical Details

Product Code	LR950-RF	LR1425-RF
Number of Fins	10	15
Power W	950	1425
Insulation Class	Class II	Class II
IP Protection	IP20	IP20
Voltage (AC)	230	230
Dimensions (H x W x D) mm	340 x 880 x 100	340 x 1280 x 100
Approvals	UKCA, CE, RoHS	UKCA, CE, RoHS
Weight (kg)	13.7kg	20.1kg

Colour: RAL9016

Popular Applications of the Neptune RF:



RF Gateway



On-the-go control via the ATC Tevolve App





Introducing the iLifestyle

The award-winning Lifestyle radiator is now a WiFi connected radiator!



Key Features Include:

- Smart controllability
- Digital connected heating solution
- Subtle design for any room
- Provides efficiency and comfort
- Maintenance free
- On-the-go control via ATC Cala App
- Featuring Open Window & Adaptive Start

The award-winning Lifestyle radiator is now a WiFi connected radiator, offering smart controllability, efficient heating and maximum comfort. A maintenance free option once installed.

Technical Details

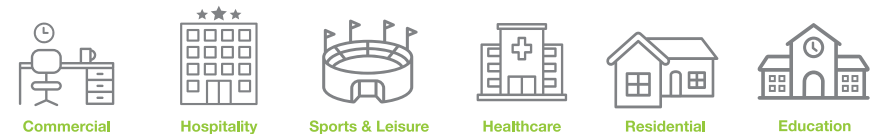
Product Code	WLS500	WLS750	WLS1000	WLS1200
Number of Fins	3	5	6	7
Power W	500	750	1000	1200
Insulation Class	Class 1	Class 1	Class 1	Class 1
IP Protection	IP24	IP24	IP24	IP24
Voltage (AC)	230	230	230	230
Dimensions (H x W x D) mm	581 x 396 x 98	581 x 556 x 98	581 x 636 x 98	581 x 716 x 98
Approvals	UKCA & CE	UKCA, CE	UKCA & CE	UKCA & CE
Weight (kg)	6.4	9.2	10.7	12

Technical Details continued

Product Code	WLS1500	WLS1800
Number of Fins	9	11
Power W	1500	1800
Insulation Class	Class 1	Class 1
IP Protection	IP24	IP24
Voltage (AC)	230	230
Dimensions (H x W x D) mm	581 x 876 x 98	581 x 1036 x 98
Approvals	UKCA & CE	UKCA & CE
Weight (kg)	14.8	17.7

RAL Colour: RAL9010

Popular Applications of the iLifestyle:

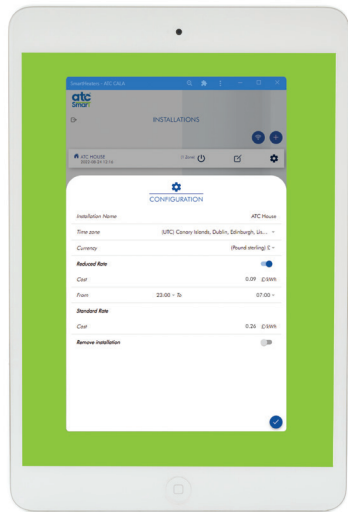


Estimate your Heating Consumption Costs

Step 1. Set up & customise based on the electricity unit rate (Kwh) from your energy supplier. Track by individual heater, entire home / premises, or zone within your home / premises.

Step 2. Use your heaters as normal.

Step 3. Track the estimated consumption as recorded by the iLifestyle ATC Cala app or directly by individual heater



Controllability whenever wherever



amazon alexa

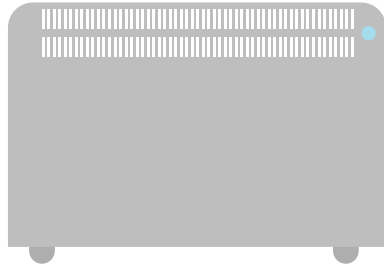
Wi-Fi 2.4 GHz Wireless Communications



iLifestyle

Energy Cost Comparison

iLifestyle vs Storage Heaters



iLifestyle

Area 18m ²	1800w
Kw cost per hour ¹	£0.49
Total consumption per day	£2.95
Total Cost Per Month	£88.53

Storage Heater

Area 18m ²	3300w
Kw cost per hour ¹	£0.20
Total consumption per day	£4.62
Total Cost Per Month	£138.60

Assumptions: The above figures are based on a 7 hour heating cycle using electricity on the night rate for the high heat retention storage heater. The thermal radiator is on at full capacity when heating, approx 50% capacity when at temperature, for 6 hours per day (2 in the morning and 4 in the evening on a standard day rate tariff.) Both heaters are worked on a 30 day month.

The calculation does not take into account the need for boost heating for the storage heaters in the evening.



Lower Bills
£88.53
Lower Energy Consumption



Higher Bills
£138.60
Higher Energy Consumption



¹ Day rate (£0.35) Night rate (£0.20) based on the Average Fixed Economy 7 plan from Nimblefins (<https://www.nimblefins.co.uk/average-cost-electricity-kwh-uk>). Standing charge not included.



Varena Electric Thermal Radiators

Quick & easy installation!



Key Features Include:

- Large, easy to read display screen
- 3 Operating modes: Eco, Comfort & Frost Protection
- Easy to use 24 hour 7 day programming

Improved Energy Efficiency:

- Adaptive Start Technology
- PID Intelligent Control
- Open Window Technology

The ATC Varena Electric Thermal Radiator is aesthetically pleasing to the eye and designed with the installer and end-user in mind.

Technical Details

Product Code	VAR500	VAR750	VAR1000	VAR1200
Number of Fins	3	5	6	7
Power W	500	750	1000	1200
Insulation Class	Class 1	Class 1	Class 1	Class 1
IP Protection	IP2X	IP2X	IP2X	IP2X
Voltage (AC)	230	230	230	230
Dimensions (H x W x D) mm	581 x 335 x 100	581 x 495 x 100	581 x 575 x 100	581 x 655 x 100
Approvals	UKCA, CE	UKCA, CE	UKCA, CE	UKCA, CE
Weight (kg)	6	8.7	10.1	11.6

RAL Colour: RAL9010

Technical Details continued

Product Code	VAR1500	VAR1800
Number of Fins	9	13
Power W	1500	1800
Insulation Class	Class 1	Class 1
IP Protection	IP2X	IP2X
Voltage (AC)	230	230
Dimensions (H x W x D) mm	581 x 815 x 100	581 x 1135 x 100
Approvals	UKCA, CE	UKCA, CE
Weight (kg)	14.2	19.8

Optional Castors available

Popular Applications of the Varena:



Thermal Radiator Features

Energy Efficiency

	iLifestyle PROFESSIONAL	Sun Ray RF ADVANCED TECHNOLOGY	Aeris ECO WiFi CONNECTED
Open Window Technology for energy savings	✓	✓	✓
PID Intelligent Control accurate to 0.2°C	✓	✓	✓
Triac Switching for long life and silent control	✓	✓	✓
Adaptive Start function for energy savings	✓	✓	✗
Ecologically friendly mineral heat transfer fluid	✓	✓	✗
Ceramic core heating element for fast consistent	✗	✗	✓

Controllability

Remote control through App	✓	✓	✓
Direct control via TFT screen	✓	✓	✓
Wireless Control via Gateway Tevolve App	✗	✓	✗

Key Features

Landlord Mode for greater control	✗	✓	✓
Password protected controls	✗	✓	✗
Lockable controls	✓	✓	✓
Manual Boost	✓	✓	✓

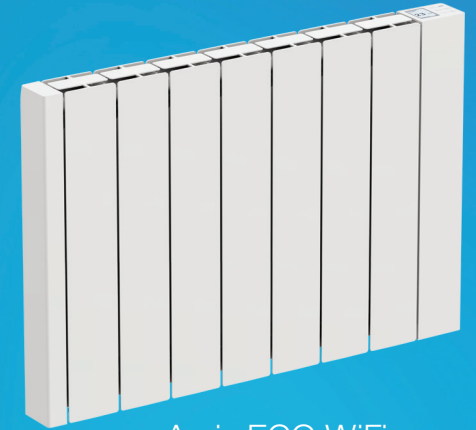
Data Sources

LOT 20 Eco Design Compliant programmable controls	✓	✓	✓
Built-in consumption meter	✓	✗	✗
Built-in fault detection	✓	✓	✗

Smart Control



iLifestyle
CONNECTED



Aeris ECO WiFi
CONNECTED



Sun Ray RF
ADVANCED TECHNOLOGY



NEW

Aeris ECO WiFi Ceramic Radiators



Key Features Include:

- Ceramic Core Heating Element for fast and consistent warmth
- Simple to Install, Program, and Operate
- Stand-alone control on the radiator
- Tuya Smartlife APP Control via smartphone for added convenience
- Top Mounted Controls for Ease of Use
- 4 Operating Modes: Manual, Program, Standby, Landlord



The Aeris ECO WiFi Ceramic Radiator is an energy-efficient WiFi-enabled ceramic radiator that combines advanced performance with smart functionality. With its slim, modern design and ceramic core technology, it's ideal for use in a wide range of spaces. The Aeris ECO WiFi can be easily installed and programmed via the dedicated app, offering precise control and reliable comfort, anytime, anywhere.

Technical Details

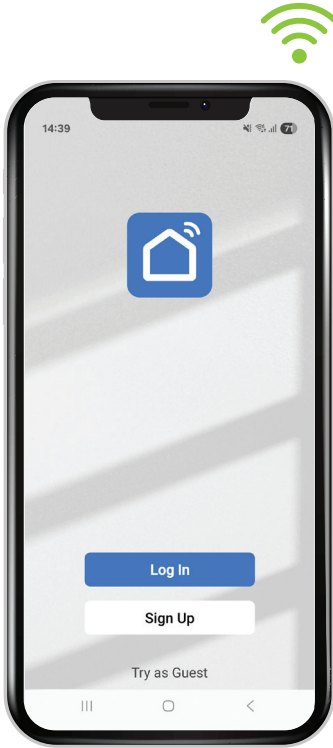
Product Code	AER500-ECO	AER1000-ECO	AER1500-ECO	AER2000-ECO
Fins	3	4	5	7
Power (W)	500	1000	1500	2000
Voltage (V)	220-240	220-240	220-240	220-240
Frequency (Hz)	50	50	50	50
WiFi Frequency	2.4GHz	2.4GHz	2.4GHz	2.4GHz
Thermostat	Electronically Adjustable between 5° and 30°			
Safety Cut-Out (OC)	120°	120°	110°	120°
Width (mm)	431	531	631	831
Depth (mm)	80	80	80	80
Height (mm)	568	568	568	568
Weight (Kg)	9.7	11.7	13.9	18.3
IP Protection	24	24	24	24
Insulation Class	Class II	Class II	Class II	Class II
Colour	White	White	White	White
Approvals	CE UKCA ERP RoHS and REACH			
Eco-Design Lot 20	Yes			

Popular Applications of the Aeris ECO WiFi:



Smarter Heating, All in One App

The Tuya Smart app allows you to connect and manage a range of ATC heating products from a single device. From the **Almeria ECO WiFi** to the new **Aeris ECO WiFi** ceramic radiator, everything can be controlled seamlessly in one place making it easy to monitor, adjust, and enhance your ATC smart heating experience.



Bespoke Heating Design

At ATC we offer a comprehensive range of Heating Design Services, catering to everyone from contractors to specifiers to sector-specific clients. We strive to ensure that you're securing the best heating solutions for your new build or renovation. We have a breadth of experience working on projects across a variety of sectors including:



Commercial



Hospitality



Residential



Sports & Leisure



Education



Healthcare

Review Criteria

It's important to review certain criteria in order to get the most energy efficient and comfortable method of heating in place.

These include:

- Room dimensions
- Glazed areas
- Insulation levels
- Heat levels in adjacent areas

Our dedicated Heating Design Team provides a full heating design to determine the correct solution for your building.

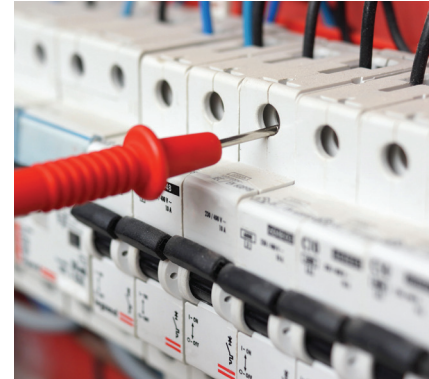
What's Involved

To provide an accurate heating design quotation, our team of experts will...

- Calculate the area & volume of each space
- Determine the amount of energy required to heat the area
- Confirm the type and amount of heaters that should be installed

Send your CAD drawing or sketch & dimensions to technical@atcelec.co.uk

We cater to



Contractors



Specifiers



General Public



Sector-Specific

**WiFi
Heaters**



**Outdoor
Heaters**



atc[®]



**Your
Heating
Partner**

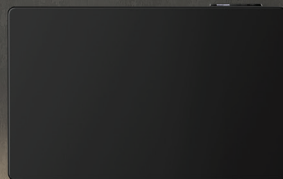
**Bathroom
Range**

**Panel
Heaters**

Digital Panel Heaters

Merida RF Digital Panel Radiators	86
Almeria ECO Digital Panel Heaters	88
Almeria ECO WiFi Panel Heaters	90
Somerset Digital Panel Heaters	94
ATC Academy	96
ATC at Robus	98

**Commercial
Heaters**





Merida RF

Digital Panel Radiators

Experience Unique



Key Features Include:

- On-the-go controllability via Tevolve App & RF Gateway
- Use less energy and save money with PID Intelligent Control
- Conserve energy with Open Window Technology
- Customised heating schedule with Adaptive Start Feature
- Triac Electronic Thermostat ensures silent operation
- Low surface temperature option
- Pin code lock

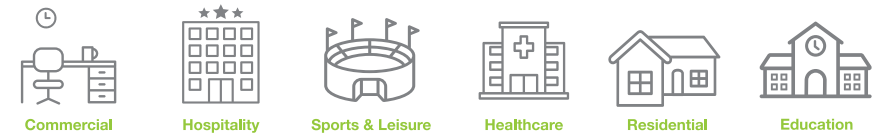
Part of the ATC Smart family of heaters, the Merida RF incorporates advanced technology to ensure energy efficiency. Install with the Sun Ray radiator and Pacific RF Heated Towel Rail for a sublime heating experience.

Technical Details

Product Code	MER500	MER750	MER1000	MER1500	MER2000
Power (W)	500	750	1000	1500	2000
Insulation Class	Class I	Class I	Class I	Class I	Class I
IP Protection	20	20	20	20	20
Voltage (AC)	230	230	230	230	230
Dimensions (HxWxD) mm	443 x 540 x 125	443 x 540 x 125	443 x 625 x 125	443 x 810 x 125	443 x 1000 x 125
Approvals	UKCA, CE, RoHS	UKCA, CE, RoHS	UKCA, CE, RoHS	UKCA, CE, RoHS	UKCA, CE, RoHS
Weight (Kg)	5.7	5.7	6.2	7.9	9

Colour: RAL9016

Popular Applications of the Merida RF:



RF Gateway

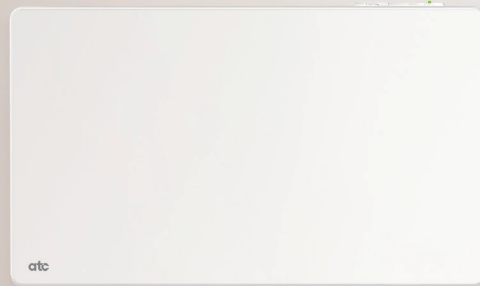


On-the-go control via the ATC Tevolve App



Almeria Eco

Digital Panel Heater



Key Features Include:

- Simple to install, program and operate
- Large, easy-to-read TFT LCD display screen
- 3 Operating Modes: Program, Manual, Landlord Mode
- 2 user adjustable temperature settings – Comfort & Economy
- Dedicated boost facility with program advance mode
- Conserve energy with Open Window Technology
- Lockable Keypad



Install and program this energy efficient digital panel heater with ease. Its sleek design makes it perfect for use in a wide variety of settings.

Technical Details

Product Code	DPH500-ECO2	DPH750-ECO2	DPH1000-ECO2	DPH1500-ECO2	DPH2000-ECO2
Power (W)	500	750	1000	1500	2000
Voltage (V)	220-240	220-240	220-240	220-240	220-240
Frequency (Hz)	50	50	50	50	50
Thermostat	Electronically Adjustable between 5° and 30°				
Safety Cut-Out (°C)	120°	120°	120°	110°	120°
Width (mm)	440	440	520	680	840
Depth (mm)	84	84	84	84	84
Height (mm)	440	440	440	440	440
Depth with Bracket (mm)	103	103	103	103	103
Weight (Kg)	4.05	4.05	4.55	5.6	6.7
IP Protection	24	24	24	24	24
Colour	White				
Approvals	CE, Intertek Gs, RoHS, ErP				
Eco-Design Lot 20	Yes				

Popular Applications of the Almeria Eco:



Commercial



Hospitality



Residential



Sports & Leisure



Education

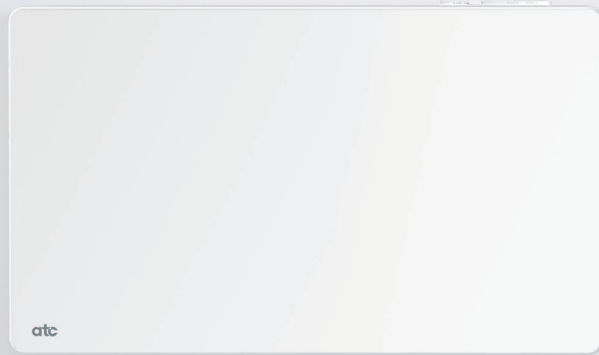


Healthcare





Almeria ECO WiFi Electric Panel Heater



Key Features Include:

- Large, easy to read TFT LCD display screen
- 3 Operating Modes: Program, Manual, Landlord
- 2 User Adjustable Temperature settings: Comfort, Economy
- Dedicated Boost facility with program advance mode
- Conserve energy with Open Window Technology
- Lockable keypad
- Simple to install, program and operate

The Almeria ECO WiFi is an energy efficient, WiFi controllable digital panel heater which can be installed and programmed with ease. Its sleek design makes it perfect for use in a range of settings.

Technical Details

Product Code	WPH750-ECO	WPH1000-ECO	WPH1500-ECO	WPH2000-ECO
Power (W)	750	1000	1500	2000
Voltage (V)	220-240	220-240	220-240	220-240
WiFi Frequency	2.4GHz	2.4GHz	2.4GHz	2.4GHz
Width (mm)	440	520	685	845
Depth (mm)	84	84	84	84
Height (mm)	440	440	440	440
Depth with Bracket (mm)	105	105	105	105
Weight (Kg)	4.05	4.55	5.55	6.65
IP Protection	24	24	24	24
Colour	White			
Approvals	CE, RoHS, ErP			
Eco-Design Lot 20	Yes			

Popular Applications of the Almeria ECO WiFi:

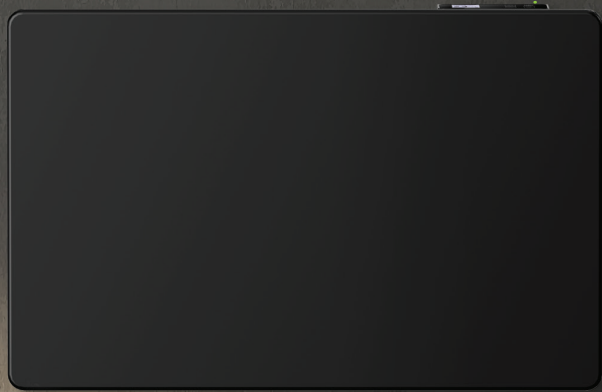


amazon alexa

WiFi 2.4GHz wireless communications



Almeria ECO WiFi Electric Panel Heater



Key Features Include:

- Large, easy to read TFT LCD display screen
- 3 Operating Modes: Program, Manual, Landlord
- 2 User Adjustable Temperature settings: Comfort, Economy
- Dedicated Boost facility with program advance mode
- Conserve energy with Open Window Technology
- Lockable keypad
- Simple to install, program and operate

The Almeria ECO WiFi is an energy efficient, WiFi controllable digital panel heater which can be installed and programmed with ease. Its sleek design makes it perfect for use in a range of settings.

Technical Details

Product Code	WPH1000BL-ECO	WPH1500BL-ECO	WPH2000BL-ECO
Power (W)	1000	1500	2000
Voltage (V)	220-240	220-240	220-240
WiFi Frequency	2.4GHz	2.4GHz	2.4GHz
Width (mm)	520	685	845
Depth (mm)	84	84	84
Height (mm)	440	440	440
Depth with Bracket (mm)	105	105	105
Weight (Kg)	4.55	5.55	6.65
IP Protection	24	24	24
Colour	Black		
Approvals	CE, RoHS, ErP		
Eco-Design Lot 20	Yes		

Popular Applications of the Almeria ECO WiFi:



amazon alexa

WiFi 2.4GHz wireless communications



Somerset Electric Panel Heater



Key Features Include:

- Compact in size
- Fits small spaces
- Simple to install, program and operate
- Countdown timer to off
- Keypad lock feature
- 3 Operating Modes: Comfort, Economy, Anti-frost
- Conserve energy with Open Window Technology
- Tilt switch for added safety
- Castors available

Simple to use electric panel heater, featuring 3 operating modes for straightforward programming. Suitable for a variety of settings.

Technical Details

Product Code	SPH500	SPH750	SPH1000	SPH1500	SPH2000
Power (W)	500	750	1000	1500	2000
Voltage (V)	230	230	230	230	230
Frequency (Hz)	50	50	50	50	50
Thermostat	Electronically Adjustable between 7° and 35°				
Safety Cut-Out (°C)	110°	110°	120°	110°	110°
Width (mm)	475	475	475	615	755
Depth (mm)	80	80	80	80	80
Height (mm)	420	420	420	420	420
Depth with Bracket (mm)	105	105	105	105	105
Weight (Kg)	3.0	3.1	3.1	3.8	4.8
IP Protection	24	24	24	24	24
Colour	White				
Approvals	CE & UKCA				
Eco-Design Lot 20	Yes				

Popular Applications of the Somerset:



Commercial



Hospitality



Residential



Sports & Leisure



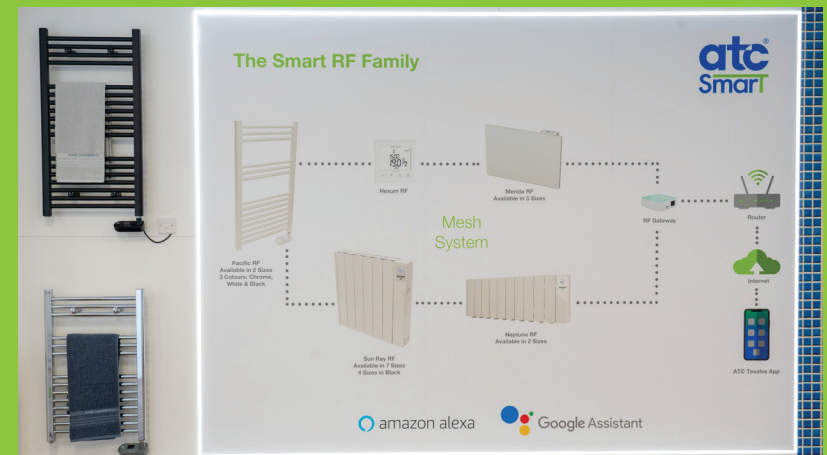
Education



Healthcare



Book a visit to the ATC Academy and Energy Showroom



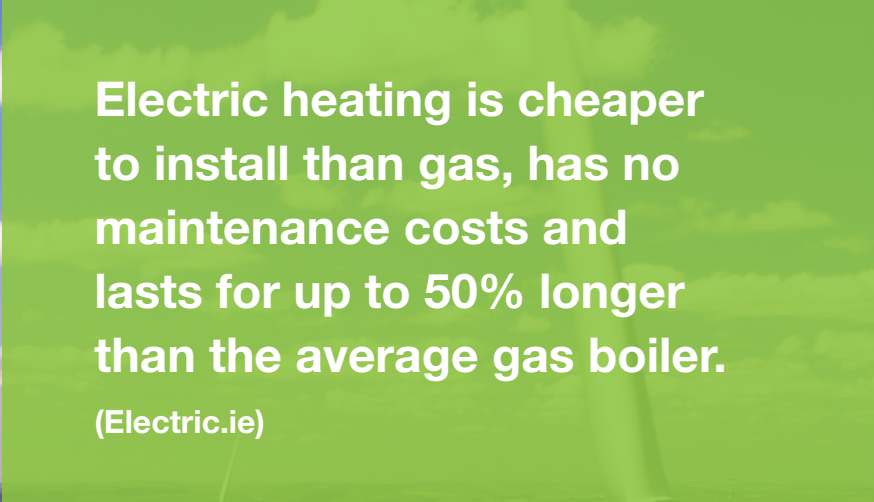
Your team will avail of professional development & product training delivered by our team of Technical Specialists.

Contact marketing@atc.ie to arrange your visit

ATC at the Robus Visitor Centre



Contact marketing@atc.ie to arrange your visit



Electric heating is cheaper to install than gas, has no maintenance costs and lasts for up to 50% longer than the average gas boiler.

(Electric.ie)



Electric Heating Products

Pacific Towel Radiators	102
Bavaro Downflow Heater	108
Mirror Defog Heaters	110
Bathroom Range	112
Welcome Overdoor Heater	114
What is Radiant Heating?	116
AuraWarm Radiant Ceiling Heaters	118
Hot Top Infrared Heater	122
Heatstat Room Thermostat	124
Nexum RF Connected Thermostat	126

Pacific Heated Towel Radiators

Ideal for bathrooms and kitchens



Key Features Include:

- Quick and easy to install
- Fitted with pre-wired electric element
- 100% leak tested
- 2 Year long life warranty



ATC Pacific Heated Towel Radiators are modern in design and aesthetically pleasing to the eye. Manufactured with carbon steel ensuring product longevity and high quality.

Technical Details

Model	ATC Pacific Heated Towel Rails – Fixed Element			
Product Code	TRC800-500-ELE300-12	TRW800-500-ELE300-12	TRB800-500-ELE300-12	TRC1000-500-ELE300-15
Colour	Chrome	White	Matt Black	Chrome
Electrical Specifications				
Voltage (Volts)	230-240 Vac 1Ø	230-240 Vac 1Ø	230-240 Vac 1Ø	230-240 Vac 1Ø
Frequency (Hertz)	50	50	50	50
Power (Watts)	300	300	300	300
Running Current (Amps)	1.3	1.3	1.3	1.3
Insulation Class	CL.I	CL.I	CL.I	CL.I
Cable Entry	Left	Left	Left	Left
Product Specifications				
Thermostat type	Fixed	Fixed	Fixed	Fixed
Temperature setting	70°C	70°C	70°C	70°C
Thermal Fuse	110°C	110°C	110°C	110°C
Mounting & Installation				
Installation	Wall mounted	Wall mounted	Wall mounted	Wall mounted
Dimensions (HxWxD) mm	800 x 500 x 110	800 x 500 x 110	800 x 500 x 110	1000 x 500 x 110
Number of Rails	12	12	12	15
Rail Diameter (mm)	22	22	22	22
Vertical Rail Profile (mm)	D 30x40	D 30x40	D 30x40	D 30x40
Weight (Kg)	9.4	9.4	9.4	11.5
IP Rating	64	64	64	64

continued

Model	ATC Pacific Heated Towel Rails - Adjustable Element	
Product Code	TRC800-500-MEG300-12	
Colour	Chrome	
Electrical Specifications		
All as table above		
Product Specifications		
Thermostat type	Adjustable	
Temperature setting	30°C-60°C in 5 steps	
Thermal Fuse	Electronically limited	
Mounting & Installation		
Installation	Wall mounted	
Dimensions (HxWxD) mm	800 x 500 x 110	
Number of Rails	12	
Rail Diameter (mm)	22	
Vertical Rail Profile (mm)	D 30x40	
Weight (Kg)	9.4	
IP Rating	X4	



Hospitality



Residential



2
YEAR
WARRANTY



Pacific RF Towel Radiator

Smart Heating, Simple Controllability



Key Features Include

- On-the-go controllability via Tevolve App and RF Gateway
- Simple to install, program and operate
- Large, easy to read TFT LCD display
- 4 Operating Modes: Eco, Comfort, Frost Protection, Landlord Mode
- PID Intelligent Control
- Open Window Technology
- Adaptive Start Feature
- Available in white, black or chrome

Part of the ATC Smart Range of products, the Pacific RF Towel Radiator provides smart connected heating, and has been designed to be used in conjunction with the Sun Ray RF and Merida RF heaters.

Technical Details

Model	ATC Pacific RF Towel Radiator		
Product Code	RFTR780WH	RFTR780BL	RFTR780CR
Colour	White	Black	Chrome
Height (mm)	780	780	780
Electrical Specifications			
Voltage (Volts)	230-240 Vac 1Ø	230-240 Vac 1Ø	230-240 Vac 1Ø
Frequency (Hertz)	50	50	50
Power (Watts)	300	300	150
Running Current (Amps)	1.3A	1.3A	0.65A
Insulation Class	CL.II	CL.II	CL.II
Cable Entry	Right	Right	Right
Mounting & Installation			
Installation	Wall mounted	Wall mounted	Wall mounted
Dimensions (HxWxD) mm	780 x 500 x 120	780 x 500 x 120	780 x 500 x 120
Height including controls (mm)	860	860	860
Weight (Kg)	9	9	9
IP Rating	44	44	44
RAL Colour	RAL9016	RAL9005	RAL 7005

Technical Details continued

Model	ATC Pacific RF Towel Radiator		
Product Code	RFTR920WH	RFTR920BL	RFTR920CR
Colour	White	Black	Chrome
Height (mm)	920	920	920
Electrical Specifications			
Voltage (Volts)	230-240 Vac 1Ø	230-240 Vac 1Ø	230-240 Vac 1Ø
Frequency (Hertz)	50	50	50
Power (Watts)	450	450	250
Running Current (Amps)	2.0A	2.0A	0.9A
Insulation Class	CL.II	CL.II	CL.II
Cable Entry	Right	Right	Right
Mounting & Installation			
Installation	Wall mounted	Wall mounted	Wall mounted
Dimensions (HxWxD) mm	920 x 500 x 120	920 x 500 x 120	920 x 500 x 120
Height including controls (mm)	1020	1020	1020
Weight (Kg)	11	11	11
IP Rating	44	44	44
RAL Colour	RAL9016	RAL9005	RAL 7005

Technical Details continued

Program Specification (For all models)

Program Type	up to 48 On off per day (30min Blocks)
Open window control	Yes
Adaptive Start	Yes
Boost	Yes
Manual Mode	Yes
Runback / Landlord mode	Yes
°C or °F	Yes
Controls lock	Yes , with or without pin code
Works With Amazon Alexa	Yes (When connected to RF Gateway)
Works With Google assistant	Yes (When connected to RF Gateway)



Hospitality



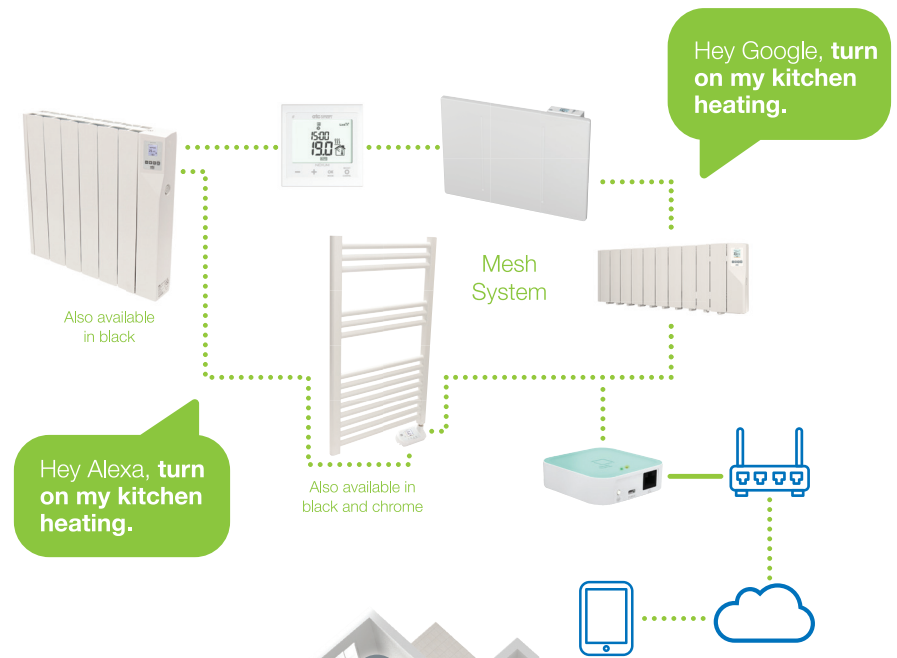
Residential

amazon alexa

Google Assistant



The Smart RF Family





Bavaro Bathroom Downflow Heater



Key Features Include:

- Easy to install
- Wall mounted
- Two power settings: 1kW & 2kW
- Pull cord operation
- Three colour neon indicator
- Electronic thermostat
- Dual safety cutouts with self resetting high level thermostat & thermal fuse

Sleek pullcord design producing a warm downflow of air to warm cold bathroom settings. Wall mounted and easy to install.

Technical Details

Model	ATC Bavaro Downflow Heater
Product Code	DF2000
Colour	White

Electrical Specifications

Voltage (Volts)	230-240 Vac 1Ø
Frequency (Hertz)	50
Power (Watts)	0 / 1000 / 2000
Running Current (Amps)	0 / 4.3 / 8.7
Insulation Class	CL.II

Product Specifications

Control	Pullcord
Timer	Yes - 30 minute countdown timer
Thermostat	Fixed. 30°C at 1kW setting, 45°C at 2kW setting
Safety Cut-out	2, Self resetting thermal cut-out and Thermal Fuse

Mounting & Installation

Installation	Wall mounted only
Dimensions (HxWxD) mm	265 x 255 x 133
Weight (Kg)	1.36
IP Rating	22





Defog Heaters

Eliminate steamed up Mirrors

Say goodbye to blurred, steamy mirrors thanks to the ATC mirror defog heater. Simple to fit, highly economical to run – luxury without the price!

Technical Details

Model	ATC Defog Heaters			
Product Code	R-1111	R-1121	R-2121	R-2141
Colour	N/A	N/A	N/A	N/A

Electrical Specifications

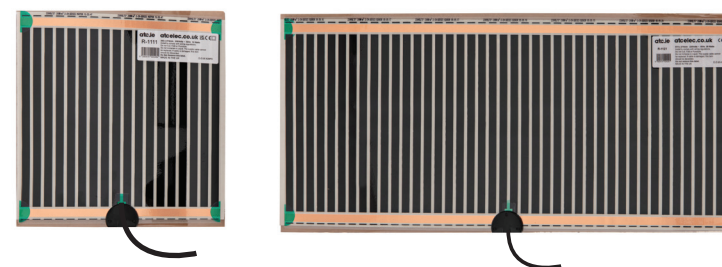
Voltage (Volts)	230-240 Vac 1Ø	230-240 Vac 1Ø	230-240 Vac 1Ø	230-240 Vac 1Ø
Frequency (Hertz)	50	50	50	50
Power (Watts)	15	25	50	100
Running Current (Amps)	0.07	0.11	0.22	0.44
Insulation Class	CL.I	CL.I	CL.I	CL.I
Power Density (w/m ²)	200	200	200	200
Cable length (m)	1	1	1	1

Mounting & Installation

Installation	Adhesive to Mirror	Adhesive to Mirror	Adhesive to Mirror	Adhesive to Mirror
Dimensions (HxWxD) mm	252 x 274 x 1	274 x 574 x 1	519 x 524 x 1	524 x 1004 x 1
Connection thickness (mm)	5	5	5	5
Weight (Kg)	0.08	0.14	0.25	0.41
IP Rating	44	44	44	44

Key Features Include:

- Self-adhesive, easy-to-fit heating pad
- Economical running costs
- Maintenance free
- Ultra slim design sits comfortably and discreetly behind mirror
- Wires into existing bathroom light fitting / fan
- Supplied with 1m cable



Bathroom Range

A Nexum RF Connected Thermostat

- Thermostat function to control indoor temperature
- Compatible with most electrical underfloor heating brands and floor sensors
- Compatible with immersion heaters and heated towel radiators
- Flexible programming – 30 or 60 minute intervals
- Pin code key lock feature
- RF Gateway is also required for remote connectivity

B Bavaro Downflow Heater

IP22 Bathroom Heater

- Smart Design
- 2 Output Stages 1kW and 2kW
- Pull Cord Switch & LED
- 30 Minute Countdown Timer
- Dual Safety Cut-out
- IP22 – Can be installed in bathrooms



Hospitality



Residential



Healthcare

C Defog Heater

- Eliminate steamed up mirrors
- Simple to fit
- Low cost
- Economical to run – just 0.1 cent per hour!
- Completely safe and maintenance free

D Pacific RF Towel Radiator

- On-the-go controllability via Tevolve App and RF Gateway
- Simple to install, program and operate
- Lockable Controls
- 4 Operating Modes: Eco, Comfort, Frost Protection, Landlord Mode
- Available in white, black or chrome



Saving Energy
Reducing the
Carbon Footprint





Welcome Overdoor Heater



Key Features Include:

- Attractive Matt Chrome finish
- 3 settings: Cool, Half Heat and Full Heat
- Hand held Infra-red Remote Control Included
- Durable Design
- Volt Free Contact for Remote Switching

The Welcome Overdoor Heater provides comfortable warm air when you enter any premises. The powerful air velocity creates a barrier to the outside cold air. Ideal option for the Commercial, Retail and Hospitality sectors, this aesthetically pleasing Overdoor Heater has some key features that differentiates it from other Overdoor heaters.

Technical Details

Model	Welcome Overdoor Heater
Product Code	WEL3000
Colour	Silver/Black
Frequency (Hz)	50

Electrical Specifications

Voltage (Volts)	230-240 Vac 1Ø
Frequency (Hertz)	50
Power (Watts)	3000 / 1500 / 50 / 0
Running Current (Amps)	0 / 0.21 / 6.5 / 13
Insulation Class	CL.I

Product Specifications

Control	Onboard/ Hand Held IR Remote/ Volt free contact
Settings	Full Heat / Half Heat / Cool Down / Off
Pre-wired	1m cable

Mounting & Installation

Installation	Wall mounted
Dimensions (HxWxD) mm	140 x 600 x 200
Weight (Kg)	7
IP Rating	20



Hospitality



Commercial



UK
CA CE

2
YEAR
WARRANTY

Infra-red remote control

What is Radiant Heating

Radiation is a method of heat transfer used in many electrical heating products.

How it Works

These products emit **electrical energy** in a way that heats objects and surfaces without affecting the air in between.

Radiant heating does not heat spaces, but rather its energy **heats up people and objects directly.**

Did You Know?

When you're enjoying the feeling of warmth on your skin when sunbathing, this is heat radiation in action!

Think about it – the sun's heat energy directly heats your body, but doesn't heat the air. That's why a cool breeze can feel most welcome on a hot day!



Next Day Delivery Across the UK*



0203 564 9164 | sales@atcelec.co.uk | [atcelec.co.uk](https://www.atcelec.co.uk)

*For orders placed by 2.30pm



AuraWarm

Low Temperature Radiant Ceiling Heaters

Key Features Include:

- Energy efficient & low energy costs
- Draught and noise free
- Ceiling mounting allows flexible use of floor and wall space
- Designed for quick and easy installation on suspended ceilings
- Bracket supplied for easy mounting onto conventional ceiling
- Attractive white finish
- Two panel sizes available

Providing an economical and draught free means of heating in commercial premises, the ATC low temperature radiant ceiling heaters provide radiant warmth from above, designed to free up wall space that is both out of sight and out of reach.

Technical Details

Model	ATC AuraWarm Low Temperature Radiant Panels	
Product Code	AW300U	AW600U
Colour	White	White

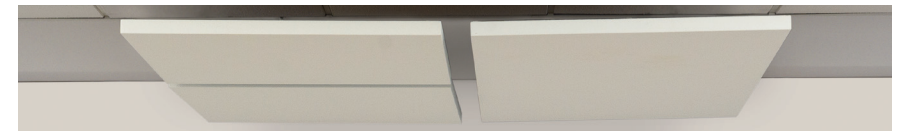
Electrical Specifications

Voltage (Volts)	230-240 Vac 1Ø	230-240 Vac 1Ø
Frequency (Hertz)	50	50
Power (Watts)	300	600
Running Current (Amps)	1.3	2.6
Insulation Class	CL.I	CL.I

Mounting & Installation

Installation	Ceiling / Surface*	Ceiling / Surface*
Dimensions (HxWxD) mm	30 x 592 x 592	30 x 592 x 1192
Weight (Kg)	5	10
IP Rating	44	44
Mounting Height	Min 2.4m Max 3m	

* Ceiling Grid or Surface mounted, (Supplied with Ceiling Bracket)



Low Temp Heater:

Easy control via the HeatStat Room Thermostat or Nexum RF Smart Thermostat*



*If using the Nexum RF, RF Gateway is also required for remote connectivity

Design Facility

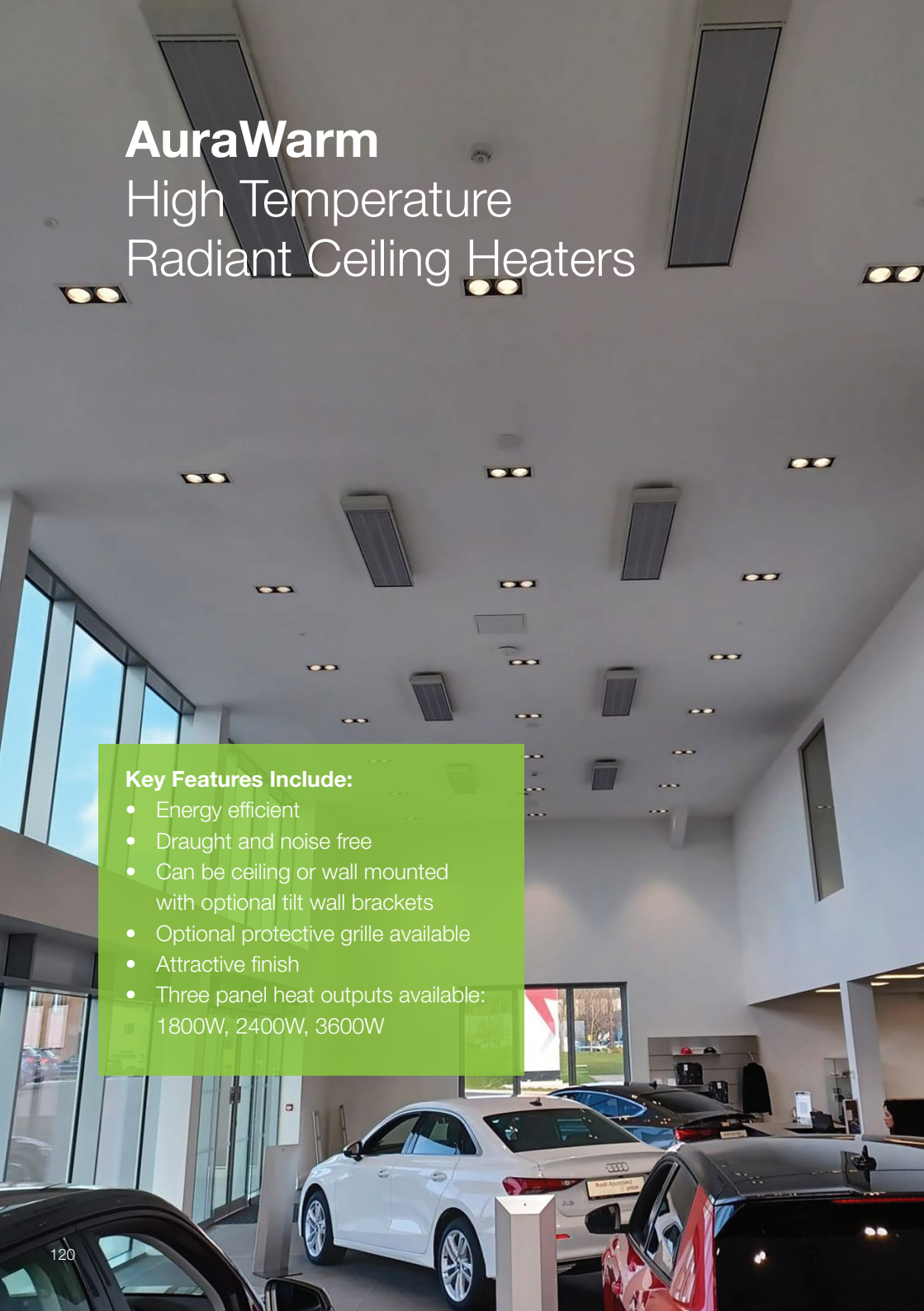
We are committed to providing comprehensive technical support for all your radiant ceiling heating projects. We now offer the most comprehensive design service yet. Simple sketches and dimensions can be converted into a professional drawing plan and quotation. All plans can be electronically sent and received for maximum efficiency e-mail: technical@atcelec.co.uk





AuraWarm

High Temperature Radiant Ceiling Heaters



Key Features Include:

- Energy efficient
- Draught and noise free
- Can be ceiling or wall mounted with optional tilt wall brackets
- Optional protective grille available
- Attractive finish
- Three panel heat outputs available: 1800W, 2400W, 3600W

Providing an economical and draught free means of heating in commercial, agricultural and industrial premises.

Technical Details

Model	ATC AuraWarm High Temperature Radiant Panels		
Product Code	AW18-Plus	AW24-Plus	AW36-Plus
Colour	White / Grey	White / Grey	White / Grey

Electrical Specifications

Voltage (Volts)	230-240 Vac 1Ø	230-240 Vac 1Ø	380-415 Vac 3Ø
Frequency (Hertz)	50	50	50
Power (Watts)	1800	2400	3600
Running Current (Amps)	7.8	10.4	5 (per Ø)
Insulation Class	CL.I	CL.I	CL.I

Mounting & Installation

Installation	Ceiling / Wall*	Ceiling / Wall*	Ceiling / Wall*
Recommended Mounting Height	3 – 3.2m	3.3 – 3.5m	3.5 – 4.5m
Dimensions (HxWxD) mm	60 x 250 x 1500	60 x 250 x 1500	60 x 350 x 1500
Weight (Kg)	9.9	9.9	13.9
IP Rating	X4	X4	X4

* Wall mounted with optional separate bracket

AuraWarm Accessories

Code	AuraWarm Accessories
5401785 -PLUS	Tiltable Wall Brackets for AW18, AW24 & AW36 Heaters
5401792	Protective Grille for AW18 & AW24 Heaters
5401794	Protective Grille for AW36 for Heater

Design Facility

We are committed to providing comprehensive technical support for all your radiant ceiling heating projects. We now offer the most comprehensive design service yet. Simple sketches and dimensions can be converted into a professional drawing plan and quotation. All plans can be electronically sent and received for maximum efficiency e-mail: technical@atcelec.co.uk





Hot Top Long Wave Radiant Heater

Discreet heating without light or glare



Not flush mounted, brackets supplied.

Key Features Include:

- Low profile aluminium finish
- Exceptional heat output
- Silent Operation
- Discreet without any light or glare
- IP55 High Performance Protection
- Brackets and 3m Cable supplied

The ATC Hot Top Radiant Heater uses Long Wave technology to create a new experience in heating, offering a discreet presence without any light or glare. Specifically for use in partially covered outdoor areas.

Technical Details

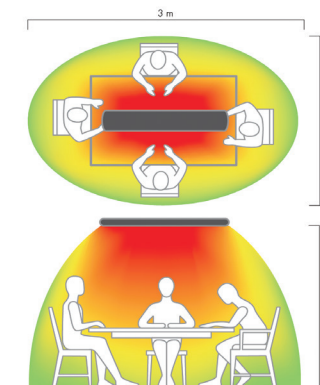
Model	ATC Hot Top Long Wave Radiant Heater
Product Code	9824
Colour	Black

Electrical Specifications

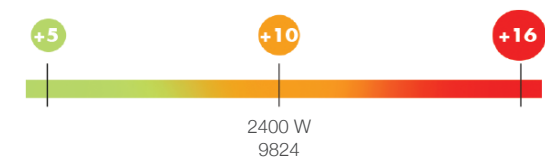
Voltage (Volts)	230-240 Vac 1Ø
Frequency (Hertz)	50
Power (Watts)	2400
Running Current (Amps)	10.4
Insulation Class	CL-I

Mounting & Installation

Installation	Wall or Ceiling
Dimensions (HxWxD) mm	80 x 201 x 1500
Weight (Kg)	6.4
IP Rating	55



Temperature by Proximity to Heater



HeatStat

Digital Thermostat



Key Features Include:

- Touch sensitive controls
- Large easy to read LCD screen
- Automatic timer with boost mode
- Dedicated manual mode
- Switches 16A resistive load
- Comes with floor probe
- Childlock feature

The HeatStat Digital Thermostat is a multi-function digital thermostat that is easy to program and control all electric heating products, including electric underfloor heating. The large, easy to read LCD screen is controlled by touch sensitive buttons allowing many control options.



Technical Details

Model HeatStat Room thermostat

Product Code HS500

Colour White

Electrical Specifications

Voltage (Volts) 220-240 Vac

Frequency (Hertz) 50-60

Switching Capacity (Amps) 16A Resistive, 1A Inductive

Control Touch sensitive buttons

Double Insulated Yes

Underfloor Heating

Supplied with Floor probe for Electric Under Floor heating control

Program Specifications

Program Type 4 On / Off per day

Program Days 5 & 2, 6 & 1, or 7 days

Control Type Floor / Room / Floor & Room

Open Window Control Yes

Manual Mode Yes

Holiday Mode Yes

Childlock Mode Yes

Automatic Timer with Boost Mode Yes

Temperature Range (Adjustment) 5° to 35°C

Mounting and Installation

Installation Wall Mounted

Dimensions (HxWxD) mm 86 x 86 x 16

IP Rating 20



Nexum RF Connected Thermostat



Key Features Include:

- On-the-go controllability via Tevolve App and RF Gateway
- Thermostat Function to control indoor temperature
- Compatible with most electrical underfloor heating brands and floor sensors
- Timer mode can be used for immersion and outdoor heaters, also works with radiant ceiling panel heaters
- Flexible programming – 30 or 60 minute intervals
- Pin code key lock



The Nexum is an RF connected digital thermostat which offers full controllability of any electric heating product, from underfloor heating to water heaters to ceiling panel heaters. Perfect for both commercial and domestic applications.

Technical Details

Model	ATC Nexum RF connected thermostat
Product Code	RF-STAT
Colour	White

Electrical Specifications

Voltage (Volts)	220-240 Vac
Frequency (Hertz)	50-60
Switching Capacity (Amps)	16 (Resistive) 1 (Inductive)
Power (Watts)	3600 Max
Control	Touch sensitive buttons
Insulation Class	CL.II
Communication	Yes, RF Gateway required

Program Specifications


Program Type	up to 48 On off per day (30 min Blocks)
Control Type	Room, Room and Floor, Floor only
Timer mode	Yes - No Temperature Control on / off only
Open Window Control	Yes
Adaptive start	Yes
Boost	Yes
Manual Mode	Yes
Runback / Landlord mode	Yes
°C or °F	Yes
Controls lock	Yes , with or without pin code
Works With Amazon Alexa	Yes (When connected to RF Gateway)
Works With Google assistant	Yes (When connected to RF Gateway)
Works with other floor probes (NTC@25°C)	Yes, 6.8kΩ, 10kΩ, 12kΩ, 15kΩ, 33kΩ, 47kΩ
Comes Complete with floor probe	Yes

Mounting and Installation

Installation	Wall mounted, 35mm recessed or Surface box required
Dimensions (HxWxD) mm	86 x 86 x 16
IP Rating	20

RF Gateway Required for Programming of Product



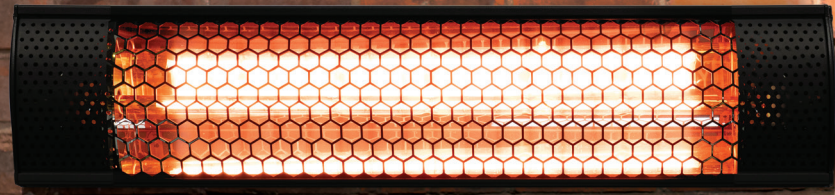


Outdoor Heating Range

Capri	130
Elba	132
Riviera	134
Sienna	136
Bluetooth Heating Controller	138
Heating Areas	140
Cost Savings	142



Capri Outdoor Heater



Key Features Include:

- Easy to install
- Low running costs
- Even spread of instant heat
- Weatherproof IP55
- Wall bracket included

An energy-efficient short wave infrared heater that can be used even in wet conditions—ideal for residential or hospitality settings where practical, reliable warmth is needed.

Technical Details

Model	Capri Outdoor Heater
Product Code	CAP2000
Colour	Black

Electrical Specifications

Voltage (Volts)	220-240 Vac 1Ø
Frequency (Hertz)	50
Power (Watts)	2000
Running Current (Amps)	8.7
Insulation Class	CL.I
Lamp type	Gold Halogen Lamp
Emmission	IR-A

Product Specifications

Mounting Height (M)	2.4
Heating Area (M ²)	Approx 15m ²
Minimum Cable size	3 X 1.0 ²
Supplied with or without cable	With approx 2m
Supplied with integral switch	Yes
Dimmable (With Controller)	Yes
With / Without grill	With
IP Rating	55

Mounting & Installation

Installation	Wall mounted
Dimensions (HxWxD) mm	107 x 570 x 115
Vertical Mounting	No
Clearance Required above (mm)	450
Weight (Kg)	1.4



Commercial



Hospitality



Residential



Sports & Leisure

UK
CA CE



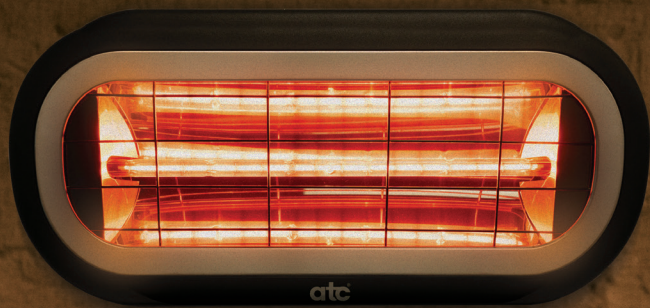
Saving Energy
Reducing the
Carbon Footprint



2
YEAR
WARRANTY

We recommend an optional HS500 for timer control on this product

Elba Outdoor Heater



Key Features Include:

- Easy to install
- Low running costs
- Enhanced heat output for wider coverage
- Weatherproof IP55
- Wall bracket included



A premium, energy-efficient short wave infrared heater for outdoor spaces, the Elba delivers powerful, consistent warmth with enhanced heat performance and wider coverage. Its durable aluminium housing ensures long-lasting performance in all-weather, perfect for residential and hospitality settings.

Technical Details

Model	Elba Outdoor Heater
Product Code	ELB2000
Colour	Black

Electrical Specifications

Voltage (Volts)	220-240 Vac 1Ø
Frequency (Hertz)	50
Power (Watts)	2000
Running Current (Amps)	8.7
Insulation Class	CL.I
Lamp type	Gold Halogen Lamp
Emmission	IR-A

Product Specifications

Mounting Height (M)	2.4
Heating Area (M ²)	Approx 24m ²
Minimum Cable size	3 X 1.0 ²
Supplied with or without cable	With approx 2m
Supplied with integral switch	Yes
Dimmable (With Controller)	Yes
With / Without grill	With
IP Rating	55

Mounting & Installation

Installation	Wall mounted
Dimensions (HxWxD) mm	190 x 460 x 110
Vertical Mounting	No
Clearance Required above (mm)	450
Weight (Kg)	2.2



Commercial



Hospitality



Residential



Sports & Leisure



We recommend an optional HS500 for timer control on this product



Riviera Outdoor Quartz Infrared Electric Heaters



Image shows 4kW Riviera Heater

While Stocks Last

Key Features Include:

- Easy to install
- Low running costs
- Even spread of instant heat
- Weatherproof IP55
- Multiple mounting heights
- Multiple mounting options – wall, ceiling, hung

A high performance infrared electric heater that is suitable for many applications, industries and environments. Unique in their mounting abilities – can be wall or ceiling mounted, or hung from a height to provide heat in unusual locations.

Technical Details

Model	Riviera 2000W	Riviera 4000W	Riviera 6000W
Product Code	RIV200 RIV200-SL	RIV400 RIV400-SL	RIV600 RIV600-SL
Colour	Black Silver	Black Silver	Black Silver

Electrical Specifications

Power output (Watts)	2000	4000	6000
Voltage	220-240	220-240	220-240
Frequency (Hertz)	50-60	50-60	50-60
Current (Amps)	9	18	3 x 9
Lamps	1	2	3
Lamp Arrangement	Single	Stacked Vertically	Stacked Vertically
Lamp type	Gold	Gold	Gold
Emission	IR-A	IR-A	IR-A

Mounting and Installation

Installation	Wall/Ceiling/Hanging	Wall/Ceiling/Hanging	Wall/Ceiling/Hanging
Mounting height	2.5-3	3-4	3-4
Heating Area (M ²)* @45°	10	24	32
Heating Area (M ²)* when hung	10 @ 3m	32 @ 4m	48 @ 4m
Minimum cable size	3 x 1.5 ²	3 x 2.5 ²	5 x 1.5 ²
Supplied with or without cable	Without	Without	Without
Lamps switchable or all together	N/A	All Together	All Together
Dimmable (With controller)	Yes	Yes	Yes
With/without grill	With	With	With

Dimensions & Weight

Dimensions (HxWxD) mm	235 x 496 x 313	375 x 496 x 313	515 x 496 x 313
Weight (Kg - Nett)	2.2	3.0	3.8
IP Rating	IP55	IP55	IP55



Commercial



Hospitality



Residential



Sports & Leisure



Saving Energy
Reducing the
Carbon Footprint



2
YEAR
WARRANTY

* Lamps are consumables and not covered under warranty. We recommend an optional HS500 timer control on this product – Loads over 3600w will require an electrical contactor.

Sienna Outdoor Quartz Infrared Electric Heaters

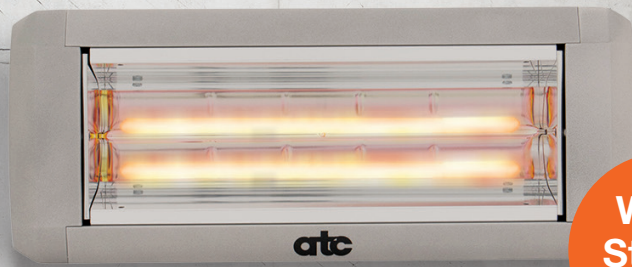


Image shows 2.2kW Sienna Heater

While Stocks Last

Key Features Include:

- Easy to install – wall mounted only
- Low running costs
- Even spread of instant heat
- Weatherproof IPX5
- 2.2kW models come complete with protective grill
- Pre-wired with cable (5m on 2.2kW and 1.5m on 4kW)



High performance, superior finished infrared outdoor heater fitted with low glare lamps to provide a comfortable level of heat. Suitable for a large range of applications, such as commercial, hospitality and sports & leisure.

Technical Details

Model	Sienna 2200	Sienna 4000
Product Code	SIE 2.2KW-SL	SIE4KW-BL SIE4KW-SL
Colour	Silver	Black Silver

Electrical Specifications

Power output (Watts)	2200	4000
Voltage	220-240	220-240
Frequency (Hertz)	50-60	50-60
Current (Amps)	10	18
Lamps	1	2
Lamp Arrangement	Single	Horizontal
Lamp type	Low Glare	Low Glare
Emission	IR-A	IR-A

Mounting and Installation

Installation	Wall (@45° Only)	Wall (@45° Only)
Mounting height	2.7 - 3m	3-3.5m
Heating Area (M ² * @45°)	10 - 15	20 - 32
Minimum cable size	3 x 1.5 ²	2x (3 x 1.5 ²)
Supplied with or without cable	With (5m)	With (2 x 1.5m)
Lamps switchable or all together	N/A	Separate supplies for each lamp
Dimmable (With controller)	Yes	Yes

Dimensions & Weight

Dimensions (HxWxD) mm	195 x 465 x 113	195 x 910 x 113
Weight (Kg - Nett)	2.45	4.05
IP Rating	IPX5	IPX5



Commercial



Hospitality



Residential



Sports & Leisure



* Lamps are consumables and not covered under warranty. We recommend an optional HS500 for timer control on this product – Loads over 3600w will require an electrical contactor.



Bluetooth Heating Controller



The Bluetooth Heating Controller allows total control of radiant heating such as the full ATC Outdoor Heating Range, up to 4.4kW. Controllable via app or remote control.

Technical Details

Product Code:	INFRA4400
Electrical Supply:	220 – 240vAC 50/60 Hz Single phase
Max Rating:	4.4kW
Control Type:	0-100% Variable output (Bluetooth) 5 Step (IR Control)
Dimensions:	195 x 118 x 63mm (wxhxd)
IP Rating:	IP56
Connections:	3x L/N/E 4mm ² Screw Connections 1x Supply, 2x Output Joined
Soft Start	Yes



Commercial



Hospitality



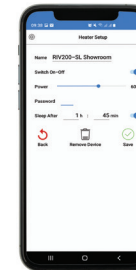
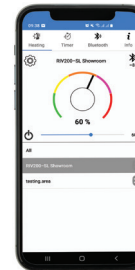
Residential



Sports & Leisure

Key Features Include:

- Controls radiant heaters up to 4.4kW
- Easy-to-use app available on App Store & Google Play
- Delay off timer feature
- Zone control when using multiple controllers
- Separate IR remote provides 5-step control



In cases where Bluetooth is not used, the INFRA4400 comes with a separate IR remote providing 5-step control.

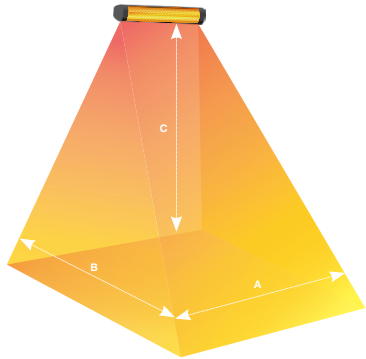


UK
CA CE

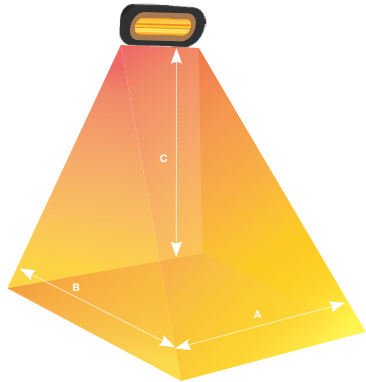


Heating Area Capri, Elba & Sienna

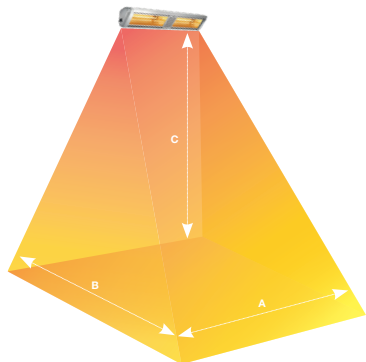
Heating Area m²



Model	Wall Mounted 45°		
	A	B	C
CAP2000	5	3	2.4



Model	Wall Mounted 45°		
	A	B	C
ELB2000	4	6	2.4



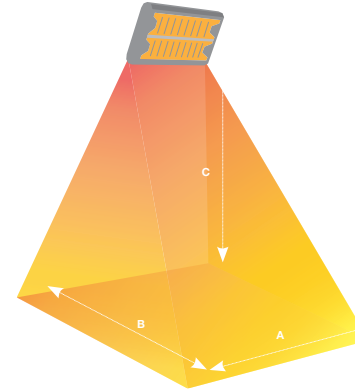
Model	Wall Mounted 45°		
	A	B	C
SIE2.2KW	5	3	3
SIE4KW	8	4	4

It is recommended to install Outdoor radiant heaters protected from strong breezes or crosswinds. Based on average ambient temperature of 10°C.

Heating Area Riviera

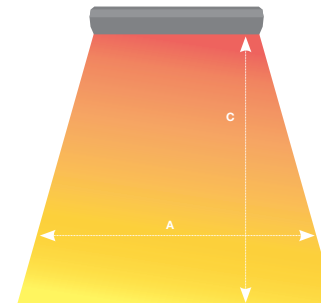
Heating Area m²

Wall Mounted 45°



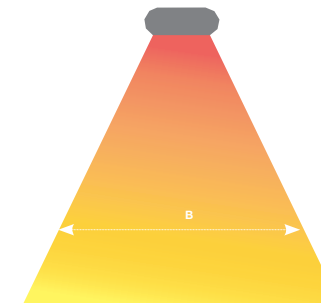
Model	Wall Mounted 45°		
	A	B	C
RIV200	5	2	3
RIV400	8	3	4
RIV600	8	4	4

Ceiling Mounted



Side View

Model	Ceiling Mounted		
	A	B	C
RIV200	5	2	3
RIV400	8	4	4
RIV600	8	6	4



End View

It is recommended to install Outdoor radiant heaters protected from strong breezes or crosswinds. Based on average ambient temperature of 10°C.

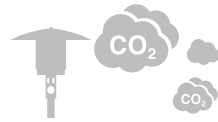
Cost Savings

Capri 2Kw Cost Savings



Annual Energy Cost: **£962**
Annual CO₂ Output: **1303kg**
Savings per Year: £6,501*

vs



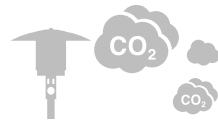
Annual Energy Cost: **£7836**
Gas Annual CO₂ Output: **5802Kg**

Elba 2Kw Cost Savings



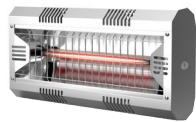
Annual Energy Cost: **£962**
Annual CO₂ Output: **1303kg**
Savings per Year: £6,501*

vs



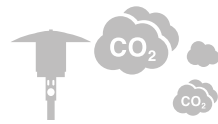
Annual Energy Cost: **£7836**
Gas Annual CO₂ Output: **5802Kg**

Riviera 2Kw Cost Savings



Annual Energy Cost: **£962**
Annual CO₂ Output: **1303kg**
Savings per Year: £6,501*

vs



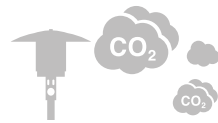
Annual Energy Cost: **£7836**
Gas Annual CO₂ Output: **5802Kg**

Sienna 4Kw Cost Savings



Annual Energy Cost: **£1,923**
Annual CO₂ Output: **2607kg**
Savings per Year: £5,540*

vs



Annual Energy Cost: **£7836**
Gas Annual CO₂ Output: **5802Kg**

Based on heaters operating 7 days @ 6 hours per day, 42 weeks per year. Figures correct as of Sept 2025. Calculations based on each heater@ energy cost of 27.3 p / KW. Gas heaters burning 1.1kg gas /hour with price of 13kg bottel @ £52.50



The **Riviera** heaters are very good and give off excellent heat. It was really helpful that we could hang the 4 Kw in the marquee which gives of excellent heat and creates a lovely atmosphere. **PM**



The six **Sienna** heaters that we installed on the balcony of the Clubhouse have gone down a treat with the members. It has transformed the area as the members are much happier dining outside in the nice warm area. I think some of them might be in touch themselves for their houses. **JB**

Look at what people
are saying about
ATC Outdoor Heating

Due to recent restrictions, we needed to transform our outdoor area so we could maximise our space and keep our staff and patrons safe and warm. The **Capri** heaters suited the job perfectly and were extremely cost effective. **TH**





Water Heaters

Pacific Water Heaters	146
Installation information	150
Why Use ATC Unvented Water Heaters?	151
Instantaneous Water Heater	152



ATC Pacific Under Sink Water Heaters

This compact undersink water heater is the ideal solution for commercial applications and can supply a number of sinks, depending on hot water demand, without the need for special taps. A cost effective solution compared to traditional vented systems.

Technical Details

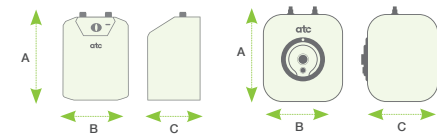
Product Code	W5-U	W10-U
Capacity (L / Gal)	5L / 1.1Gal	10L / 2.2Gal
Power Watts (W)	2000W	2000W
Voltage (V)	220-240V	220-240V
Frequency (Hz)	50 / 60 Hz	50 / 60Hz
Max Pressure (Bar)	8 Bar	8 Bar
Connections	1/2"	1/2"
Thermostat	External	External
Approvals	UKCA, CE, RoHS	UKCA, CE, RoHS
ERP Class	B	B
IP Rating	IPX4	IPX4

Dimensions

W5-U	
Height A	285mm
Width B	240mm
Depth C	240mm
W10-U	
Height A	300mm
Width B	340mm
Depth C	330mm

Expansion Vessels for Water Heaters

Code	Description	Box Qty
KIT-A	2L Expansion Vessel with 1/2 " BSP for 5L, 10L & 15L Water Heaters	1



Recommended Selection Guide

Capacity of Water Heater	Number of Basins	Heat up time
5 litres	1 – 2	5 Litres – 11 mins*
10 litres	2 – 3	10 Litres – 19 mins*
15 litres	3 – 4	*10° to 65°C

Note: These figures are for guidance only.



W5-U

W10-U

Key Features Include:

- Includes pressure relief valve for safe and easy installation
- Energy efficient
- Available in 2 sizes: 5L & 10L
- Power indicator light
- External adjustable thermostat control
- Includes wall bracket
- Comes with protective anode rod for maximum tank life
- Quick recovery element
- Suitable for use with mains water supply
- Not suitable for mixer taps

Ideal for: Offices, Canteens, Mobile Homes, Apartments and Workshops.



ATC Pacific Under Sink Water Heaters



W15-U

Key Features Include:

- Includes pressure relief valve for safe and easy installation
- Energy efficient
- Power indicator light
- External adjustable thermostat control
- Includes wall bracket
- Comes with protective anode rod for maximum tank life
- Quick recovery element
- Suitable for use with mains water supply
- Not suitable for mixer taps

Ideal for: Offices, Canteens, Mobile Homes, Apartments and Workshops.

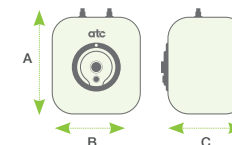
Technical Details

Product Code	W15-U
Capacity (L / Gal)	14L / 3 Gallons
Power Watts (W)	2500W
Voltage (V)	220-240V
Frequency (Hz)	50 / 60 Hz
Max Pressure (Bar)	8 Bar
Connections	1/2"
Thermostat	External
Approvals	UKCA, CE, RoHS
ERP Class	B
IP Rating	IPX4

Dimensions

W15-U

Height A	337mm
Width B	364mm
Depth C	354mm



Expansion Vessels for Water Heaters

Code	Description	Box Qty
KIT-A	2L Expansion Vessel with 1/2 " BSP for 5L, 10L & 15L Water Heaters	1

Recommended Selection Guide

Capacity of Water Heater	Number of Basins	Heat up time
5 litres	1 – 2	14 litres - 22 mins*
10 litres	2 – 3	*10° to 65°C
15 litres	3 – 4	

Note: These figures are for guidance only.



Commercial



Hospitality



Residential



Sports & Leisure



Education



Healthcare

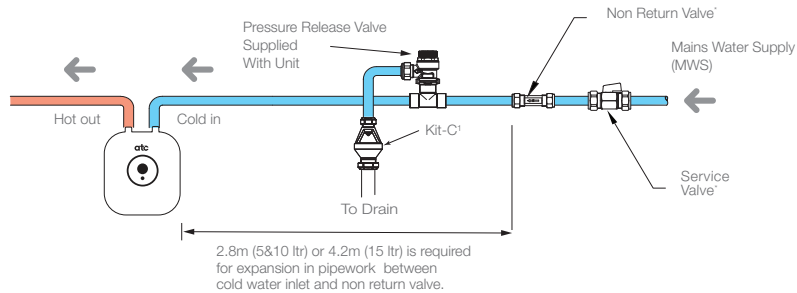




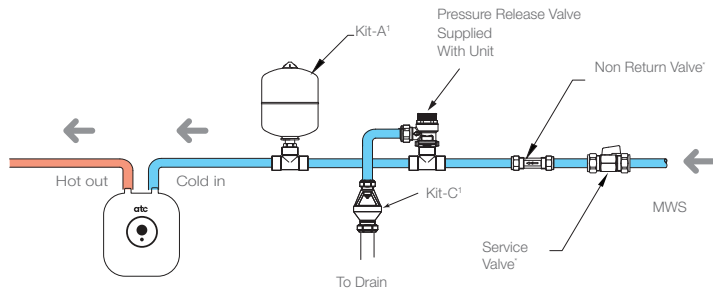
Installation Information

Installation of commercial unvented water heaters and kit options

For Inlet water pressure up to 4.1 bar.

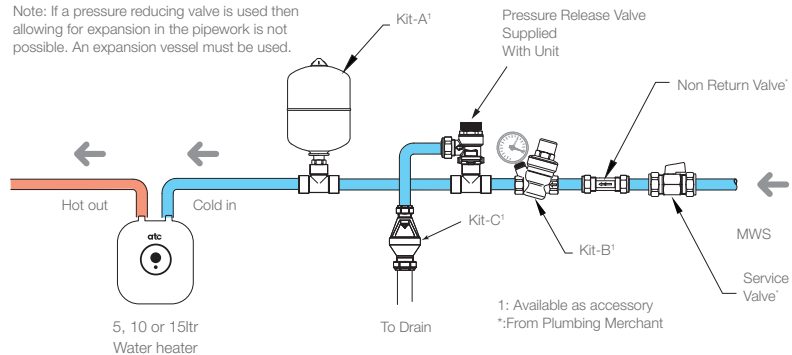


For Inlet water pressure up to 4.1 bar where expansion in the mains is not possible.



For Inlet water pressure over 4.1 bar

Note: If a pressure reducing valve is used then allowing for expansion in the pipework is not possible. An expansion vessel must be used.



Why Use ATC Unvented Water Heaters?

Energy Efficient

- Fitted with Polyurethane Foam Insulation that reduces heat loss, which Reduces Energy consumption and ensures High Energy Efficiency
- External Thermostat Control with Economy setting for Energy Efficiency
- High performance 2KW square flange heating element which is more Durable and Efficient

Tough and Durable

- Unique Dry Porcelain Enamel Tank lining delivers at least twice the Corrosion Resistance of ordinary glass lining
- Fitted with a Premium Protective Magnesium Anode which equalises aggressive water action and provides Extra Protection against Corrosion

Safety

- Fitted with Thermostat and Limiting Device to protect against overheating



ATC Instantaneous Water Heater



Key Features Include:

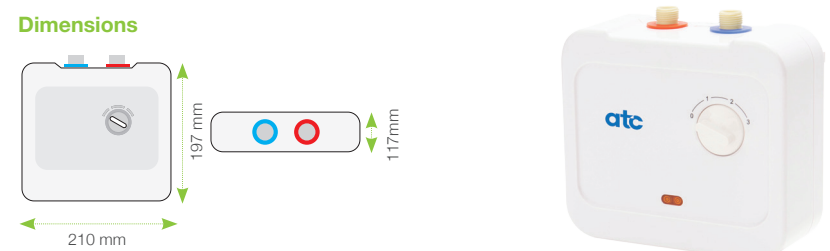
- Easy to install
- Energy efficient
- ON / OFF switch – 3 heat options
- Wall mounted – reinforced bracket with internal steel bar
- External casing – made from strong ABS plastic
- Capillary thermostat
- No stored water avoiding legionella
- Suitable for use with mains water supply
- Not suitable for mixer taps

This compact instantaneous water heater provides instant hot water for the smallest of spaces. Only heats water when required, making it a very energy efficient option.

Technical Details

Product Code	DFF-KAM5.5
Power	5.5kW (2.5+3)
Voltage	220 - 240 Vac
Frequency	50/60Hz
Min Water Flow Rate	2 l/m
Min Water Pressure	80 kPa
Max Water Pressure	0.6 Mpa
Water Connection	15mm dia (1/2" BSP)
IP Rating	IPx4
ERP Rating	B

Dimensions



Brochure Range

Explore our range of eBrochures available to view online or download!



Hospitality Heating Solutions



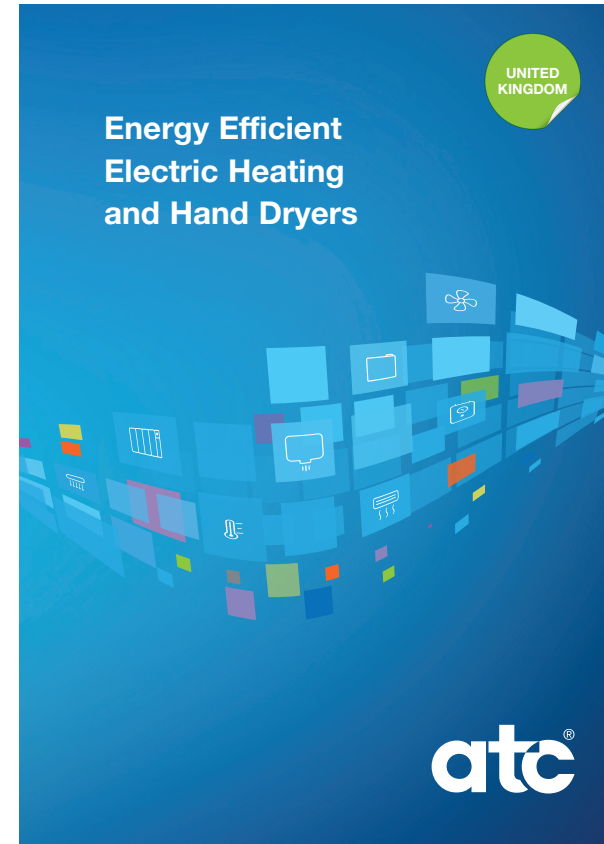
Education Buildings Solutions



Healthcare Heating Solutions



Commercial Heating Solutions



Please contact our Sales Department to avail of our counter display boxes:
0203 564 9164
sales@atcelec.co.uk
atcelec.co.uk



15 available in box

Visit atcelec.co.uk/brochures

Find your Local Sales Representative

Visit atcelec.co.uk/contact



Contact sales@atcelec.co.uk to find your local stockist

Spare Parts Listing

Model	Spare Part	Description
Cub High Speed	Z-2651-PCB	Cub High Speed PCB
	Z-2651-ELEMENT	Cub High Speed Element
	Z-2651-MOTOR	Cub High Speed Motor
	Z-2651-BRACKET	Cub High Speed Bracket
	Z-2651-SENSOR	Cub High Speed Sensor
	Z-2651M-BRUSHES	Cub High Speed Pair of Brushes
	Z-2651M-COVER	Cub High Speed Matt Stainless Steel cover
	Z-2651BL-COVER	Cub High Speed Black Stainless Steel cover
Z-2651WH-COVER	Cub High Speed White Stainless Steel cover	
Cheetah	Z-2281-PCB2	Cheetah PCB inc Sensor
	Z-2281-ELEMENT	Cheetah Element
	Z-2281-MOTOR	Cheetah Motor
	Z-2281-BRUSHES	Pair of Brushes for Cheetah motor
	Z-2281M-COVER	Cheetah Cover Matt Brushed Steel
	Z-2281W-COVER	Cheetah Cover White
Tiger ECO	Z-3145-BRUSHES	Pair of Longlife Brushes for Tiger Eco Hand Dryer
	Z-3145-DUST	Dust Filter for Tiger ECO
	Z-3145-HEPA	HEPA Filter for Tiger ECO
	Z-3145-ELEMENT	Element for Tiger ECO Hand Dryer
	Z-3145M-COVER	Stainless steel cover for Tiger ECO
	Z-3145W-COVER	White cover for Tiger ECO
	Z-3145-MOTOR	Motor for Tiger ECO
Z-3145-PCB	PCB for Tiger ECO complete with Sensor	
Puma	Z-2000M-PCB	Puma PCB
	Z-2000M-ELEMENT	Puma Element
	Z-2000M-MOTOR	Puma Motor
	Z-2000M-BRUSHES	Pair of Puma Brushes
	Z-2000M-COVER	Puma Cover
	Z-2000M-FILTER	Puma Filter
Panther ECO	ATC-ZA01-COVER	White Cover for ZA01 Panther
	ATC-ZA05-COVER	Stainless steel Cover for ZA05 Panther and PANZA06
	ATC-ZA05-BRUSHES	Pair of Brushes
	ATC-ZA05-MOTOR	ATC High Speed Hand Dryer Motor ZA01 & ZA05 Panther
	VERSION 6 - PANTHER	PCB & SENSORS - ZA01 & ZA05 Panther

Model	Spare Part	Description
Long Life Panther		
Panza06		
	PANZA06-BRUSHES	Pair of brushes for PANZA06
	PANZA06-ELEMENT	Element - PANZA06 Panther
	PANZA06-PCB 2	PCB & Sensor - PANZA06 Panther
	FILTER-ASSEMBLY-PLASTIC	Panther Filter incl active carbon and 3M filter
	HEPA-PANTHER	Hepa Filter for Panther & Steel housing
Premblade15		
	PREM-PCB-MK1	Premblade15 PCB Board for Dryers made prior to April 2019
	PREM-PCB-MK2	Premblade15 PCB Board for Dryers made after August 2019
	PREM-BRUSH	Cleaning Brush for Premblade15
	PREM-START-BOARD	Start Board for Premblade15 Hand Dryer
	PREM-STOP-BOARD	Stop Board for Premblade15 Hand Dryer
	PREM-ELEMENT	Premblade15 Element
	PREM-MOTOR	Premblade15 Motor
	PREM-TOPCOVER	Top Cover for Premblade15
	PREM-FRONT-COVER	Front Cover for Premblade15
	HEPA-FILTER-BLADES	HEPA Filter for Premblade 15
	PREM-DUST-FILTER	Dust Filter for Premblade
	PREM-WATERTRAY	Water tray for Premblade
GS-Blade		
	GS-2006H-PCB-MARK1	PCB for ATC GS-Blade Mark 1
	GS-2006H-PCB-MARK3	PCB for ATC GS-Blade Mark 3
	GS-2006H-START-BOARD	Start Board for GS-Blade Hand Dryer
	GS-2006H-STOP-BOARD	Stop Board for GS-Blade Hand Dryer
	GS-2006H-ELEMENT	Element for GS-Blade Hand Dryer
	GS-2006H-MOTOR	Motor for ATC GS-Blade Hand Dryer
	GS-2006H-FRONT COVER-SLV	Front Cover for GS-Blade Hand Dryer
	GS-2006H-FILTER	Filter for ATC GS-Blade
	GS-2006H-WATERTRAY	Water Tray for ATC GS-Blade Dryer
	GS-2006H-EMI-FILTER	EMI Filter for ATC GS-Blade
	GS-2006H-PFC-FILTER	PFC Filter for ATC GS-Blade Dryer
	GS-2006H-BACK COVER	Back Cover for GS-Blade Hand Dryer
	GS-2006H-BRACKET	Bracket for GS-2006H

Model	Spare Part	Description
Eco-Blade		
	VERSION 4-ECOMO-22	Round ECO-Blade& Sensor Version 4
	VERSION 4-NEW-ECOMO-12	Square ECO-Blade PCB & Sensor Version 4
	HEPA-FILTER	ECO-Blade HEPA Filter
Water Heating		
	W-Bracket	Bracket fits all sizes
	W-Valve	Pressure Relief Valve - 6 bar
	W- Dielectric	Plastic Dielectric connectors (2 req)
	W5-GASKET	Element Gasket W5-U only
	W10-ANODE	Magnesium Anode W5-U & W10-U
	W10-GASKET	Element Gasket W10-U & W15U
	W15-ANODE	Magnesium Anode W15-U only
Presto Boilers		
	FP-ELE-2-0	PRESTO 2KW ELEMENT
	FP-PCB	PRESTO PC BOARD
	FP-VALVKIT	PRESTO SOLENOID VALVE KIT
	FP-TAP-O/ASS	PRESTO TAP ASSEMBLY
	FP-PROBE-5	PRESTO LOW LEVEL PROBE 5LT
	FP-PROBE-7-5	PRESTO LOW LEVEL PROBE 7.5LT
	FP-PROBE-10	PRESTO LOW LEVEL PROBE 10LT
	FP-THERMIS	PRESTO THERMISTOR
Lifestyle Radiators		
	CASTORS	Pair of Castors for iLifestyle, Lifestyle & Varena
	LS-METAL-BRACKETS	Pair of Brackets for iLifestyle, Lifestyle & Varena
	LS-BRACKET-COVER	Plastic covers for Metal Brackets 1 set required per pair of brackets
	LS-LEFT-CASE	Lifestyle Left Plastic Casing
	LS-RIGHT-CASE	Lifestyle Right Case c/w Electronics
iLifestyle Connected Radiators		
	CASTORS	Pair of Castors for iLifestyle, Lifestyle & Varena
	LS-METAL-BRACKETS	Pair of Brackets for iLifestyle, Lifestyle & Varena
	LS-BRACKET-COVER	Plastic covers for Metal Brackets 1 set required per pair of brackets
	WLS-LEFT-CASE	iLifestyle Left Plastic Casing - NO electronics
	WLS-RIGHT-CASE	iLifestyle Right Case c/w Electronics
Varena Radiators		
	CASTORS	Pair of Castors for iLifestyle, Lifestyle & Varena
	LS-METAL-BRACKETS	Pair of Brackets for iLifestyle, Lifestyle & Varena
	LS-BRACKET-COVER	Plastic covers for Metal Brackets 1 set required per pair of brackets
	C43022901	Varena Right casing c/w electronics

Model	Spare Part	Description
RF Sun Ray Radiators		
	E0500669	RF Complete End Panel With Electronics (For RF500-RF1500)
	E0500671	RF Complete End Panel With Electronics (For RF1800W)
	E0500626	WF Complete End Panel With Electronics (For WF500-WF1500)
	E0500627	WF Complete End Panel With Electronics (For WF1800W)
	RF-BRACKETS	Single bracket for RF Radiators - 2 req 350 to 1800,
	RF-FEET	Floor Mounting kit for RF Radiators
	RF-KIT	2 Plastic Wall Brackets, 1 Locking Bracket
	RF-SLIDING-BRACKET	RF Sliding Bracket

Original Sun Ray Radiators

	CASTORS	Pair of Castors for Original Sunray & Sunray Plus
	LS-METAL-BRACKETS	Pair of Brackets for Original Sunray & Sunray Plus
	LS-BRACKET-COVER	Plastic covers for Metal Brackets 1 set required\ per pair of brackets
	SEND-COMPLETE	Analogue Control Panel for Sunray C/W Electronics
	SPEND-COMPLETE	Sunray Plus Right Plastic Casing Assembly C/W Electronics

Merida Radiators

	MER500/750 BRACKET	MER500/750 Bracket
	MER1000 BRACKET	MER1000 Bracket
	MER1500 BRACKET	MER1500 Bracket
	MER2000 BRACKET	MER2000 Bracket
	MER-CONTROL	Merida Control Box complete

Almeria DPH Panel Heaters

	DPH-BRACKET-SM	150mm DPH ECO Bracket for DPH500/750/1000-ECO
	DPH-BRACKET-MED	310mm DPH ECO Bracket for DPH1500-ECO
	DPH-BRACKET-LG	425mm DPH ECO Bracket for DPH2000-ECO
	DPHECO-CASTOR	Pair of Castors for DPH ECO

Model	Spare Part	Description
Varma Outdoor Heaters		
	VARMALAMP2KW-IPX5	Halogen Lamp for all Varma IP X5 models
	VARMALAMP2KW	Halogen Lamp for Varma non IP models

Riviera Outdoor Heaters

	RIV2KW-Lamp	Spare Lamp for all Riviera outdoor heaters
	RIV200-BRACKET	Bracket for RIV200
	RIV400-BRACKET	Bracket for RIV400/600
	RIV - Grille	Replacement Grille for RIV Heaters

Sienna Outdoor Heaters

	SIE2.2KW-LAMP	Spare Lamp for Sienna 2.2KW
	SIE2.2KW-GRILLE	Replacement Grille for Sienna 2.2kw 000097401
	SIE4KW-LAMP	Spare Lamp for Sienna 4KW

INFRA4400

	INFRA4400-REMOTE	Replacement remote control for INFRA4400
--	------------------	--

Towel Rails

	TRC-BRACKET	Brackets for Chrome straight non RF Towel Rail
	TRW-BRACKET	Brackets for White straight non RF Towel Rail
	RFTRW-BRACKET	Brackets for White RF Towel Rail
	RICA300W	Not suitable for RF range

RF Towel Rails

	RFTR-ELEMENT-300W	Element for 780 sized, White or Black Towel Rails Only
	RFTRB-Bracket	Black Brackets for RF Towel Rails
	RFTRW-Bracket	White Brackets for RF Towel Rails
	RFTRBL-Control	RFTR Control Black
	RFTRCR-Control	RFTR Control Chrome
	RFTRWH-Control	RFTR Control White

Welcome Overdoor Heater

	WEL3000-CONTROLS	Control Panel Buttons and IR Receiver
--	------------------	---------------------------------------

Head Office & Showrooms:

ATC House,

Broomhill Drive,
Tallaght, Dublin 24
Ireland, D24 EF99

UK Tel: 0203 5649164

Email: sales@atcelec.co.uk

Business Hours:

Monday - Thursday: 8.30 - 17.00

Friday: 8.30 - 16.00

atcelec.co.uk



**QUALITY APPROVED
COMPANY**

Issue 10 UK

atc[®]

LED GROUP

ROBUS[®]
atc[®]

FuseBox[®]
NATIONAL LIGHTING